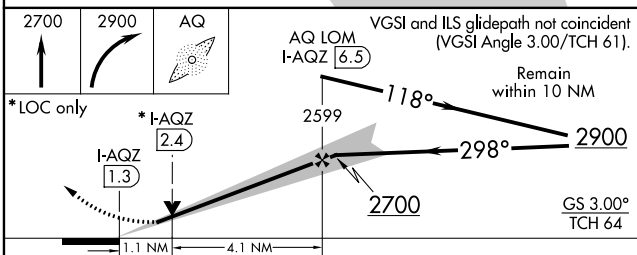
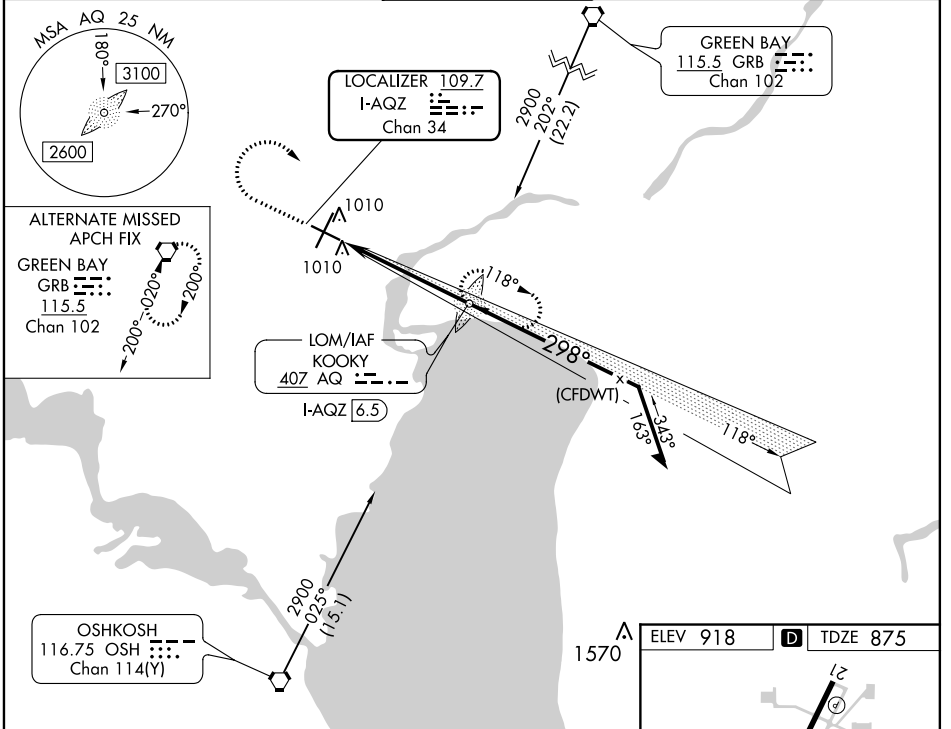


LOC/DME I-AQZ 109.7 Chan 34	APP CRS 298°	Rwy Idg TDZE Apt Elev	6501 875 918
---	------------------------	-----------------------------	---

ILS or LOC RWY 30

APPLETON INTL (ATW)

ADF required.		MALSR	MISSED APPROACH: Climb to 2700 then climbing right turn to 2900 direct KOOKY LOM/I-AQZ 6.5 DME and hold.	
ATIS 127.15	GREEN BAY APP CON* 126.3 338.2	APPLETON TOWER* 119.6 (CTAF)	GND CON 121.7	UNICOM 122.95



CATEGORY	A	B	C	D
S-ILS 30	1075-½		200 (200-½)	
S-LOC 30	1260-½	385 (400-½)	1260-⅝	385 (400-⅝)
CIRCLING	1340-1 422 (500-1)	1380-1 462 (500-1)	1400-1½ 482 (500-1½)	1480-2 562 (600-2)

ELEV 918 **D** TDZE 875

TWR 961

5501 X 150

8002 X 150

0.9% UP

298° 5.2 NM from FAF

REIL Rwy 12 and 21
HIRL Rwy 12-30 and 3-21

FAF to MAP 5.2 NM

Knots	60	90	120	150	180
Min:Sec	5:12	3:28	2:36	2:05	1:44

EC-3, 07 OCT 2021 to 04 NOV 2021

EC-3, 07 OCT 2021 to 04 NOV 2021