

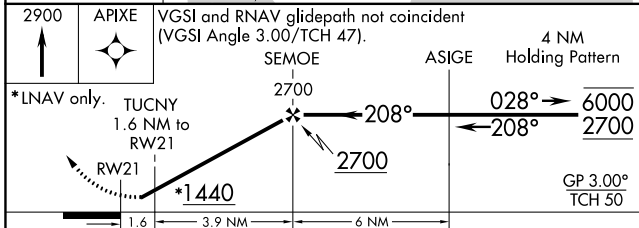
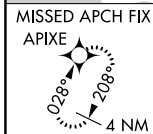
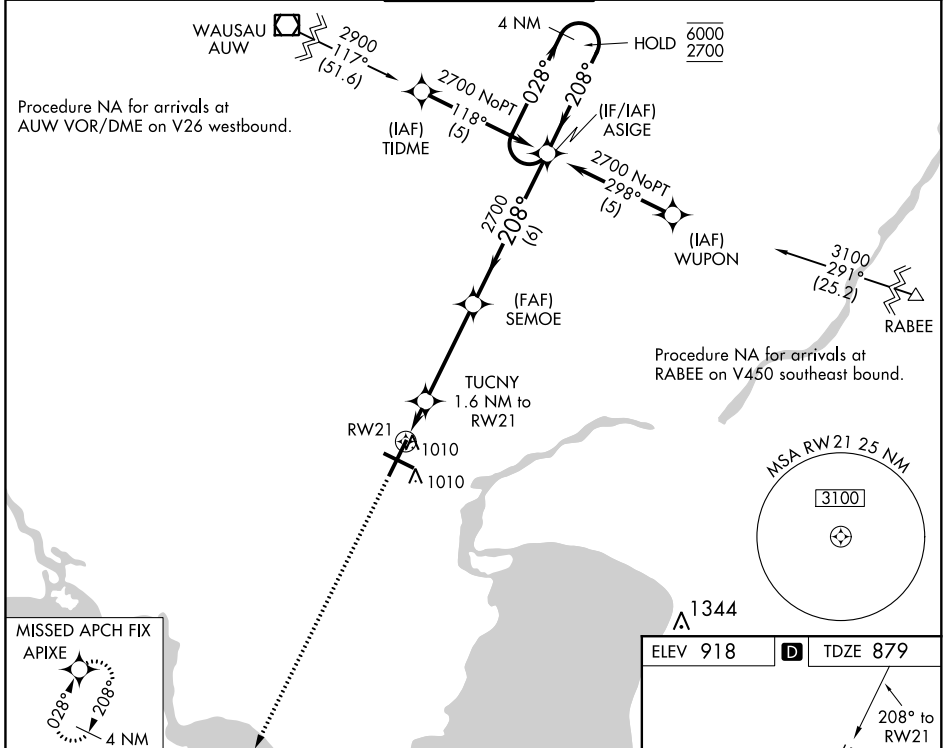
WAAS CH 93517 W21A	APP CRS 208°	Rwy Idg TDZE Apt Elev	8002 879 918
--	------------------------	-----------------------------	---

RNAV (GPS) RWY 21

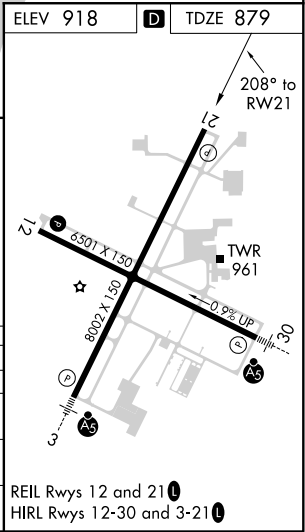
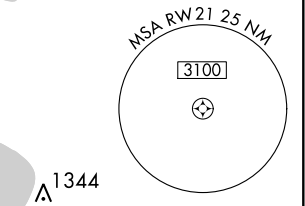
APPLETON INTL (ATW)

RNP APCH.			MISSED APPROACH: Climb to 2900 direct APIXE and hold.
<p>▼ Rwy 21 helicopter visibility reduction below 1 SM NA. For uncompensated Baro-VNAV systems, LNAV/VNAV NA below -16°C or above 47°C.</p>			

ATIS 127.15	GREEN BAY APP CON* 126.3 338.2	APPLETON TOWER* 119.6(CTAF) 0	GND CON 121.7	UNICOM 122.95
-----------------------	--	---	-------------------------	-------------------------



CATEGORY	A	B	C	D
LPV DA	1129-1		250 (300-1)	
LNAV/VNAV DA	1261-1¼		382 (400-1)	
LNAV MDA	1280-1	401 (400-1)	1280-1¼	401 (400-1¼)
CIRCLING	1340-1 422 (500-1)	1380-1 462 (500-1)	1400-1½ 482 (500-1½)	1480-2 562 (600-2)



EC-3, 07 OCT 2021 to 04 NOV 2021

EC-3, 07 OCT 2021 to 04 NOV 2021