

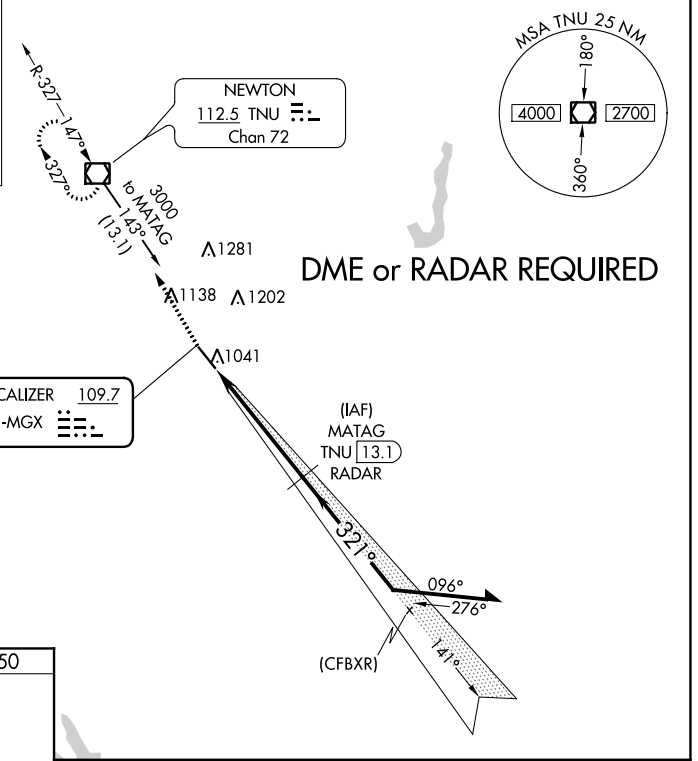
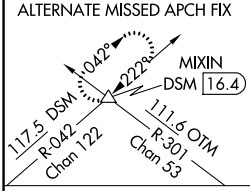
LOC I-MGX 109.7	APP CRS 321°	Rwy Idg TDZE Apt Elev	5600 950 953
---------------------------	------------------------	-----------------------------	---

ILS or LOC RWY 32

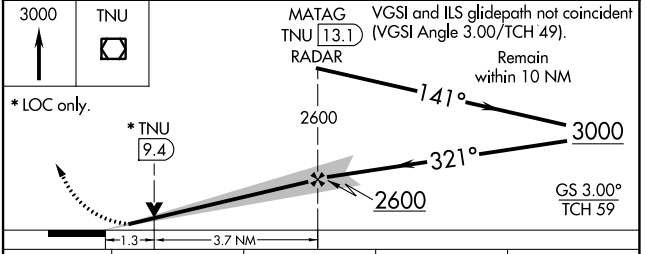
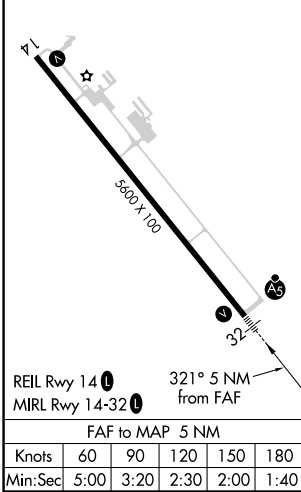
NEWTON MUNI-EARL JOHNSON FIELD (TNU)

NA For inop MALSRS, increase ILS all Cats visibility to 7/8 SM.	MALSRS MISSED APPROACH: Climb to 3000 direct TNU VOR/DME and hold.
---	---

AWOS-3 132.275	DES MOINES APP CON 123.9 307.15	CLNC DEL 126.3	UNICOM 122.8 (CTAF)
--------------------------	---	--------------------------	-------------------------------



ELEV 953	TDZE 950
----------	----------



CATEGORY	A	B	C	D
S-ILS 32	1150-1/2 200 (200-1/2)			
S-LOC 32	1400-1/2 450 (500-1/2)	1400-7/8 450 (500-7/8)		
CIRCLING	1420-1 467 (500-1)	1440-1 487 (500-1)	1520-1 567 (600-1 1/2)	1600-2 647 (700-2)

NC-3, 07 OCT 2021 to 04 NOV 2021

NC-3, 07 OCT 2021 to 04 NOV 2021