

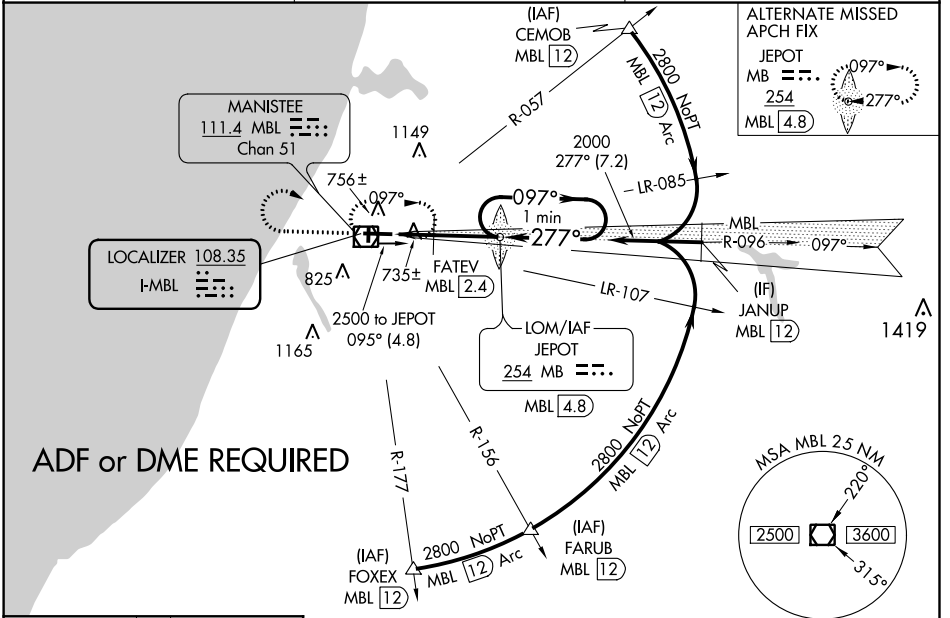
LOC I-MBL 108.35	APP CRS 277°	Rwy Idg 5501
		TDZE 621
		Apt Elev 621

ILS or LOC RWY 28
MANISTEE COUNTY-BLACKER (MBL)

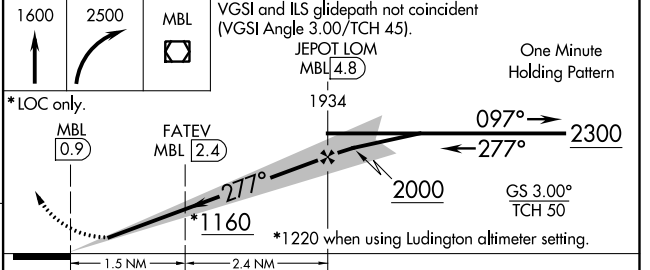
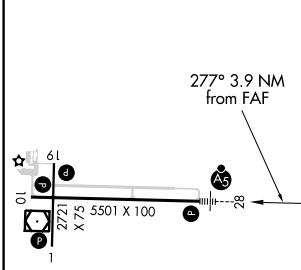
NA Night landing: Rwy 1/19 NA. When local altimeter setting not received, use Ludington altimeter setting: increase DA to 871 feet and all MDA 60 feet; increase S-LOC 28 Cat C/D and Circling Cat C/D visibility 1/4 SM. FATEV FIX minimums: increase S-LOC 28 Cat C/D visibility 1/8 SM and Circling Cat C/D 1/4 SM.

MALSR MISSED APPROACH: Climb to 1600 then climbing right turn to 2500 direct MBL VOR/DME and hold, continue climb-in-hold to 2500.

AWOS-3PT 111.4	MINNEAPOLIS CENTER 120.85 322.35	UNICOM 122.8 (CTAF)
--------------------------	--	-------------------------------



ELEV 621	D TDZE 621
----------	-------------------



HIRL Rws 10-28 **1**
MIRL Rws 1-19 **1**
REIL Rws 10 **1**

FAF to MAP 3.9 NM

Knots	60	90	120	150	180
Min:Sec	3:54	2:36	1:57	1:34	1:18

CATEGORY	A	B	C	D
S-ILS 28	821-1/2 200 (200-1/2)			
S-LOC 28	1160-1/2 539 (600-1/2)	1160-1 539 (600-1)		
CIRCLING	1160-1 539 (600-1)	1200-1 579 (600-1)	1400-2 779 (800-2 1/4)	1500-2 879 (900-2 3/4)
FATEV FIX MINIMUMS				
S-LOC 28	1000-1/2 379 (400-1/2)	1000-3/8 379 (400-3/8)		
CIRCLING	1140-1 519 (600-1)	1200-1 579 (600-1)	1400-2 779 (800-2 1/4)	1500-2 879 (900-2 3/4)

EC-1, 07 OCT 2021 to 04 NOV 2021

EC-1, 07 OCT 2021 to 04 NOV 2021