

WAAS CH <b>60933</b> <b>W10A</b>	APP CRS <b>097°</b>	Rwy Idg <b>5501</b> TDZE <b>621</b> Apt Elev <b>621</b>
--	------------------------	---

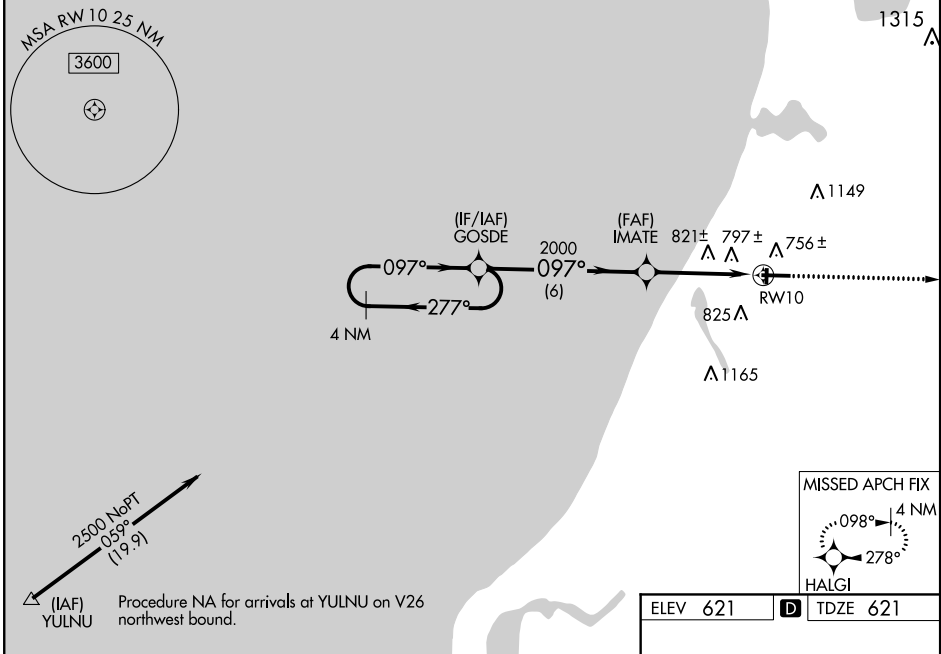
# RNAV (GPS) RWY 10

MANISTEE COUNTY-BLACKER (MBL)

⚠ Night landing Rwy 1/19 NA. For uncompensated Baro-VNAV systems, LNAV/VNAV NA below -16°C (4°F) or above 54°C (130°F). DME/DME RNP -0.3 NA. Baro-VNAV and VDP NA with Ludington altimeter setting. Helicopter visibility reduction below 3/4 SM not authorized. When local altimeter setting not received, use Ludington altimeter setting: increase LPV DA to 921 feet and all Cats visibility 1/4 SM; increase LNAV/VNAV DA to 1141 feet and all Cats visibility 1/8 SM. Increase all MDA 60 feet and increase LNAV Cat C/D visibility 1/8 SM and Circling Cat C/D visibility 1/4 SM.

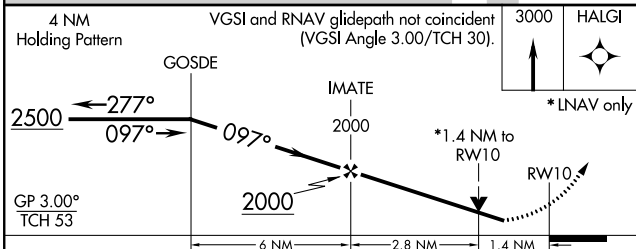
MISSED APPROACH:  
Climb to 3000 direct HALGI and hold.

AWOS-3PT <b>111.4</b>	MINNEAPOLIS CENTER <b>120.85 322.35</b>	UNICOM <b>122.8 (CTAF) I</b>
--------------------------	--	---------------------------------



EC-1, 07 OCT 2021 to 04 NOV 2021

EC-1, 07 OCT 2021 to 04 NOV 2021



ELEV 621	<b>D</b> TDZE 621
----------	-------------------

CATEGORY	A	B	C	D
LPV DA	871-3/4 250 (300-3/4)			
LNAV/VNAV DA	1091-15/8 470 (500-15/8)			
LNAV MDA	1080-1	459 (500-1)	1080-13/8	459 (500-13/8)
CIRCLING	1140-1 519 (600-1)	1200-1 579 (600-1)	1400-21/4 779 (800-21/4)	1500-23/4 879 (900-23/4)

