


WAAS CH <b>42532</b> <b>W28A</b>	APP CRS <b>278°</b>	Rwy Idg TDZE Apt Elev	<b>5501</b> <b>621</b> <b>621</b>
--	------------------------	-----------------------------	---

# RNAV (GPS) RWY 28

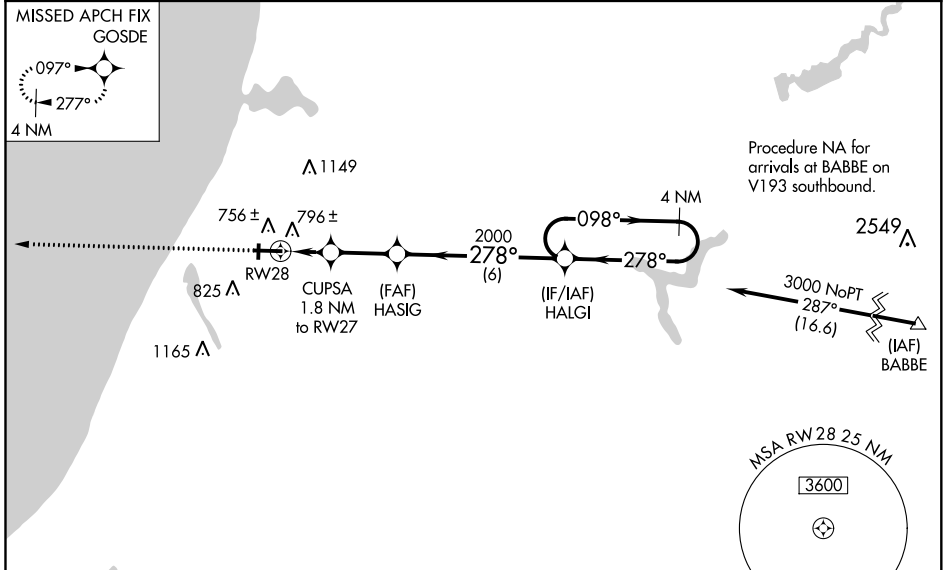
MANISTEE COUNTY-BLACKER (MBL)

**⚠** Night landing: Rwy 1/19 NA. Baro-VNAV NA when using Ludington altimeter setting. For uncompensated Baro-VNAV systems, LNAV/VNAV NA below -1.6°C (4°F) or above 54°C (130°F). DME/DME RNP-0.3 NA. VDP NA with Ludington altimeter setting. When local altimeter setting not received, use Ludington altimeter setting: increase LPV DA to 871 feet; increase LNAV/VNAV DA to 1034 feet and all Cats visibility 1/8 SM; increase all MDA 60 feet and increase LNAV Cat C/D and Circling Cat C/D visibility 1/4 SM.

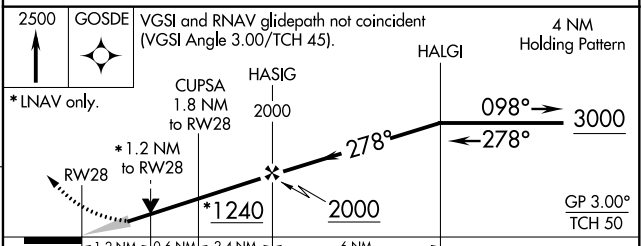
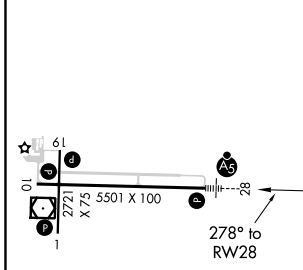
**MALS** 

**MISSED APPROACH:**  
Climb to 2500 direct GOSDE and hold.

AWOS-3PT <b>111.4</b>	MINNEAPOLIS CENTER <b>120.85 322.35</b>	UNICOM <b>122.8 (CTAF) 0</b>
--------------------------	--	---------------------------------



ELEV 621	<b>D</b>	TDZE 621
----------	----------	----------



CATEGORY	A	B	C	D
LPV DA		821-1/2	200 (200-1/2)	
LNAV/VNAV DA		984-3/4	363 (400-3/4)	
LNAV MDA	1060-1/2	439 (500-1/2)	1060-3/4	439 (500-3/4)
CIRCLING	1140-1 519 (600-1)	1200-1 579 (600-1)	1400-2 1/4 779 (800-2 1/4)	1500-2 3/4 879 (900-2 3/4)

HIRL Rws 10-28 **0**  
MIRL Rws 1-19 **0**  
REL Rwy 10 **0**

EC-1, 07 OCT 2021 to 04 NOV 2021

EC-1, 07 OCT 2021 to 04 NOV 2021