

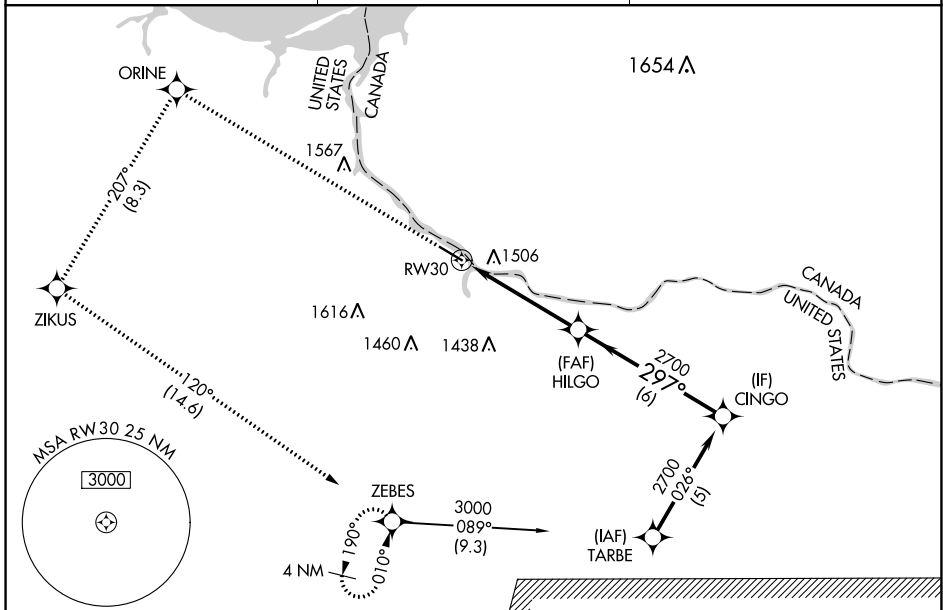
WAAS CH <b>81814</b> <b>W30A</b>	APP CRS <b>297°</b>	Rwy Idg TDZE Apt Elev	<b>5498</b> <b>1085</b> <b>1085</b>
--	------------------------	-----------------------------	---

# RNAV (GPS) RWY 30

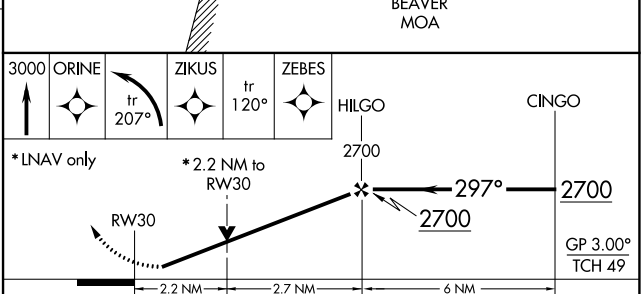
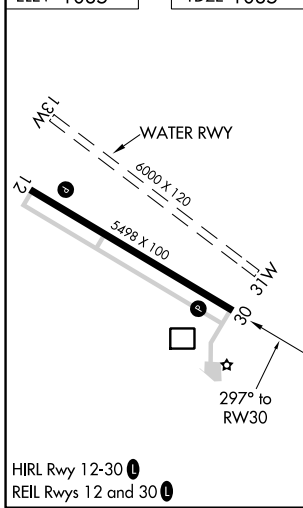
BAUDETTE INTL (BDE)

RNP APCH.	<p><b>⚠</b> Circling NA to Rwy 13W and 31W. Rwy 30 helicopter visibility reduction below 3/4 SM NA. For uncompensated Baro-VNAV systems, LNAV/VNAV NA below -17°C or above 54°C.</p>	<p>MISSED APPROACH: Climb to 3000 direct ORINE and left turn on track 207° to ZIKUS and on track 120° to ZEBES and hold.</p>
-----------	--	--

ASOS <b>126.775</b>	MINNEAPOLIS CENTER <b>134.75 251.1</b>	UNICOM <b>122.8 (CTAF) 0</b>
------------------------	---	---------------------------------



ELEV 1085	TDZE 1085
-----------	-----------



CATEGORY	A	B	C	D
LPV DA		1335-3/4	250 (300-3/4)	
LNAV/VNAV DA		1985-4	900 (900-4)	
LNAV MDA	1820-1	735 (800-1)	1820-2 735 (800-2)	1820-2 1/4 735 (800-2 1/4)
<b>C</b> CIRCLING	1860-1 775 (800-1)	1860-1 1/4 775 (800-1 1/4)	1860-2 1/4 775 (800-2 1/4)	1860-2 1/2 775 (800-2 1/2)

NC-1, 07 OCT 2021 to 04 NOV 2021

NC-1, 07 OCT 2021 to 04 NOV 2021