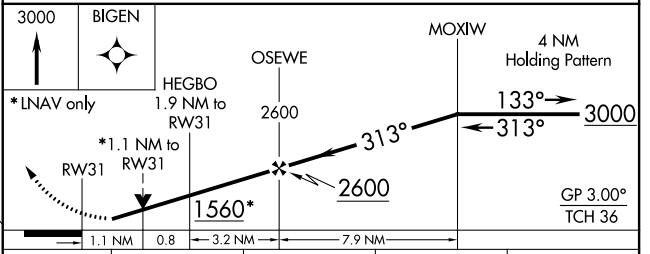
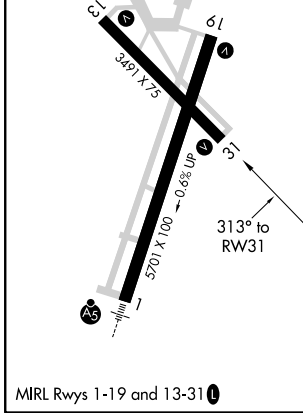
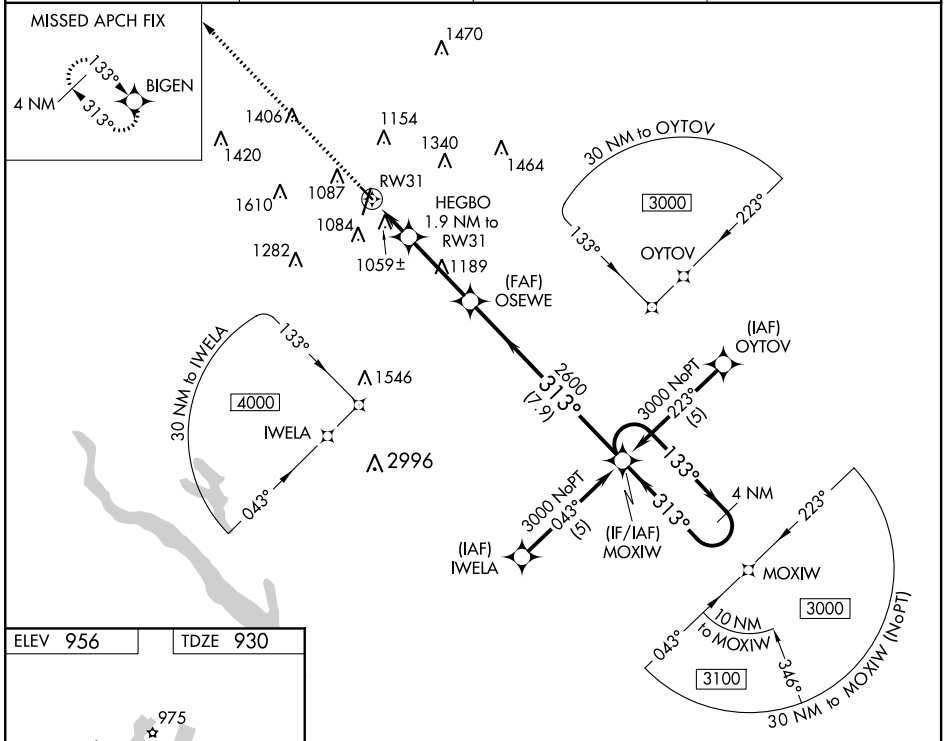


| | | | |
|--|------------------------|-----------------------------|---|
| WAAS CH 90517 W31A | APP CRS 313° | Rwy Idg TDZE Apt Elev | 3491 930 956 |
|--|------------------------|-----------------------------|---|

RNAV (GPS) RWY 31

AMES MUNI (AMW)

| | | | |
|--|---|---|---|
| RNP APCH. | | MISSED APPROACH: Climb to 3000 direct BIGEN and hold. | |
| <p>▼ For uncompensated Baro-VNAV systems, LNAV/VNAV NA below -16°C or above 54°C. Rwy 31 helicopter visibility reduction below ¾ SM NA.</p> <p>❄ -27°C</p> | | | |
| ASOS 132.025 | DES MOINES APP CON 123.9 307.15 | CLNC DEL 126.0 | UNICOM 122.7 (CTAF) AS V |



| CATEGORY | A | B | C | D |
|--------------|---|---------|--------------|----|
| LPV DA | | 1205-1 | 275 (300-1) | NA |
| LNAV/VNAV DA | | 1436-1¾ | 506 (500-1¾) | NA |
| LNAV MDA | | 1320-1 | 390 (400-1) | NA |

NC-3, 07 OCT 2021 to 04 NOV 2021

NC-3, 07 OCT 2021 to 04 NOV 2021