

WAAS CH 99501 W16A	APP CRS 159°	Rwy Idg 5002 TDZE 1278 Apt Elev 1278
--	------------------------	---

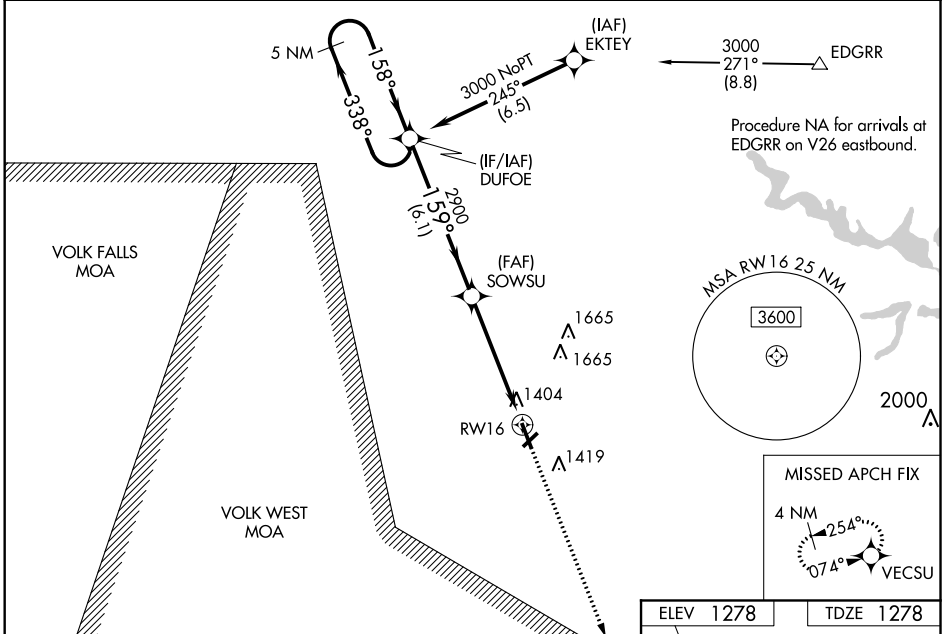
RNAV (GPS) RWY 16

MARSHFIELD MUNI (MFI)

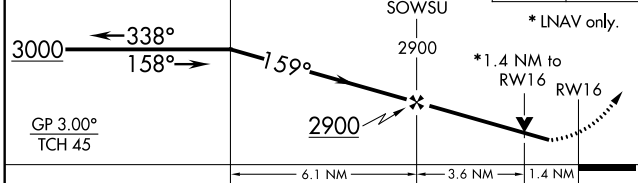
⚠ For uncompensated Baro-VNAV systems, LNAV/VNAV NA below -21°C (-5°F) or above 54°C (130°F). Baro-VNAV and VDP NA when using Central Wisconsin altimeter setting. DME/DME RNP-0.3 NA. Rwy 16 helicopter visibility reduction below ½ SM NA. When local altimeter setting not received, use Central Wisconsin altimeter setting and increase all DA 56 feet and all visibility ¼ SM, increase all MDA 60 feet and LNAV Cat C/D visibility ¼ SM.

MISSED APPROACH:
Climb to 3000 direct VECSU and hold.

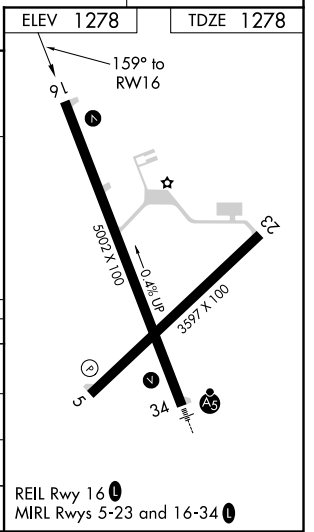
ASOS 121.575	MINNEAPOLIS CENTER 124.4 317.7	UNICOM 123.0 (CTAF)
------------------------	--	-------------------------------



5 NM Holding Pattern
 VGSI and RNAV glidepath not coincident (VGSI Angle 3.00/TCH 35).
 DUFOE
 SOWSU
 3000
 VECSU
 *LNAV only.



CATEGORY	A	B	C	D
LPV DA		1639-1¼	361 (400-1¼)	
LNAV/VNAV DA		1682-1¾	404 (500-1¾)	
LNAV MDA	1760-1	482 (500-1)	1760-1¾	482 (500-1¾)
C CIRCLING	1760-1	482 (500-1)	2020-2¼ 742 (800-2¼)	2020-2½ 742 (800-2½)



EC-3, 07 OCT 2021 to 04 NOV 2021

EC-3, 07 OCT 2021 to 04 NOV 2021