

LOC/DME I-HEV 110.7 Chan 44	APP CRS 217°	Rwy Ldg TDZE 743 Apt Elev 755
---	------------------------	---

ILS or LOC RWY 22

SHEBOYGAN COUNTY MEML (SBM)

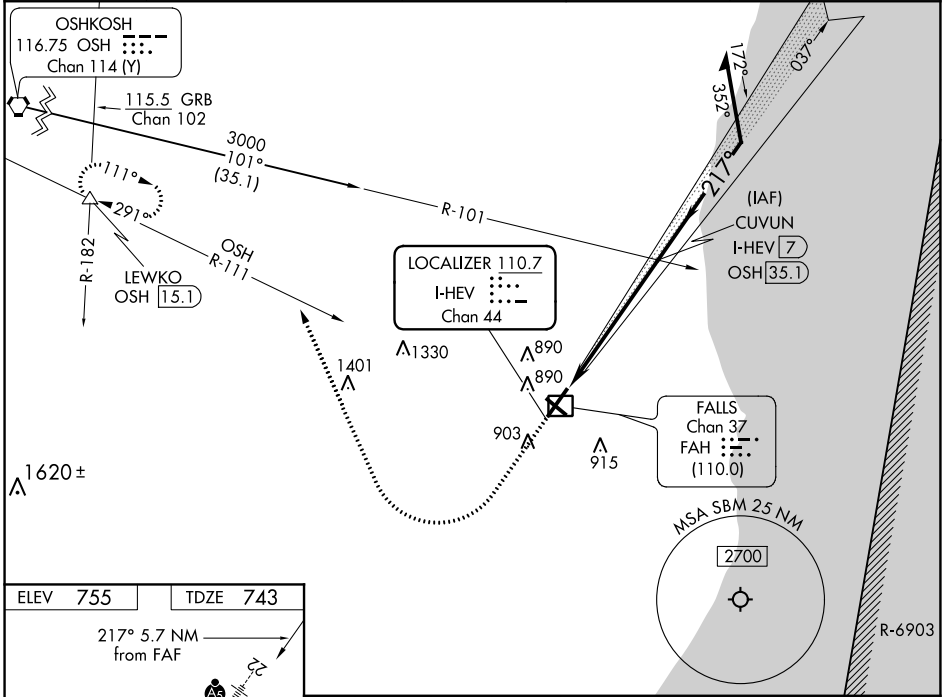
DME required.

⚠ NA

MALS R

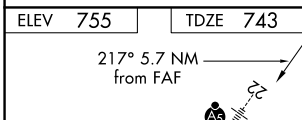
MISSED APPROACH: Climb to 1400 then climbing right turn to 3000 on heading 338° and OSH VORTAC R-111 to LEWKO INT/OSH 15.1 DME and hold.

ASOS 118.425	MILWAUKEE APP CON 127.375 263.075	GCO 121.725	CLNC DEL 127.375	UNICOM 122.7 (CTAF) 0
------------------------	---	-----------------------	----------------------------	---------------------------------



EC-3, 07 OCT 2021 to 04 NOV 2021

EC-3, 07 OCT 2021 to 04 NOV 2021

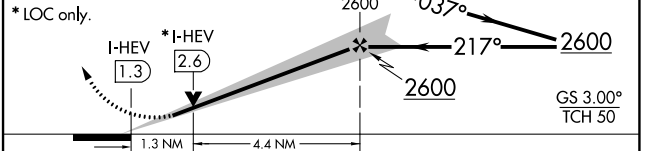


1400	3000	OSH R-111	LEWKO	Use I-HEV DME when on the localizer course.
------	------	-----------	-------	---

↑ hdg 338°

CUVUN I-HEV 7

Remain within 10 NM



CATEGORY	A	B	C	D
S-ILS 22	943-1/2 200 (200-1/2)			
S-LOC 22	1200-1/2 457 (500-1/2)	1200-7/8 457 (500-7/8)		
C CIRCLING	1200-1 445 (500-1)	1220-1 465 (500-1)	1240-1 1/2 485 (500-1 1/2)	1360-2 605 (700-2)