

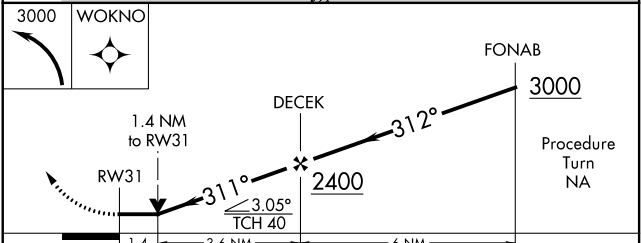
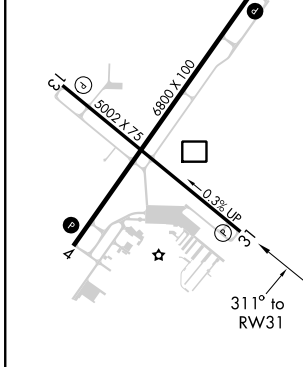
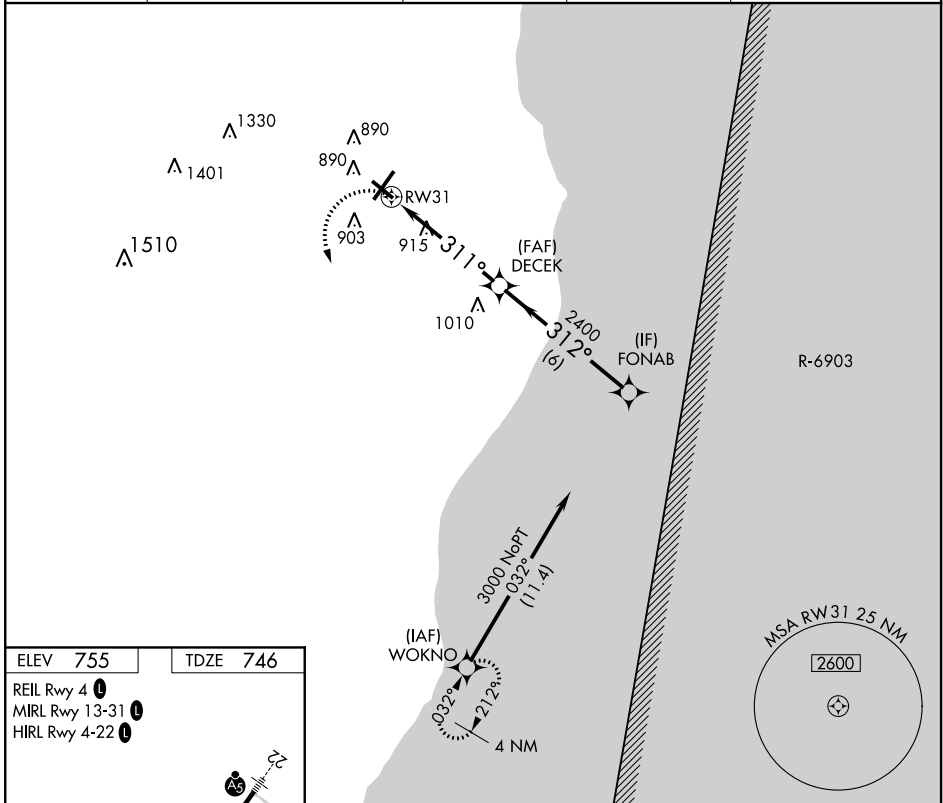
APP CRS 311°	Rwy Idg 5002
	TDZE 746
	Apt Elev 755

RNAV (GPS) RWY 31

SHEBOYGAN COUNTY MEML (SBM)

RNP APCH.	MISSED APPROACH: Climbing left turn to 3000 direct WOKNO and hold.
Rwy 31 helicopter visibility reduction below 3/4 SM NA.	

ASOS 118,425	MILWAUKEE APP CON 127.375 263.075	GCO 121.725	CLNC DEL 127.375	UNICOM 122.7 (CTAF)
------------------------	---	-----------------------	----------------------------	-------------------------------



	A	B	C	D
CATEGORY	A	B	C	D
LNAV MDA	1220-1	474 (500-1)	1220-1 1/4 474 (500-1 1/4)	1220-1 1/2 474 (500-1 1/2)
CIRCLING	1200-1 445 (500-1)	1220-1 465 (500-1)	1240-1 1/2 485 (500-1 1/2)	1360-2 605 (700-2)

EC-3, 07 OCT 2021 to 04 NOV 2021

EC-3, 07 OCT 2021 to 04 NOV 2021