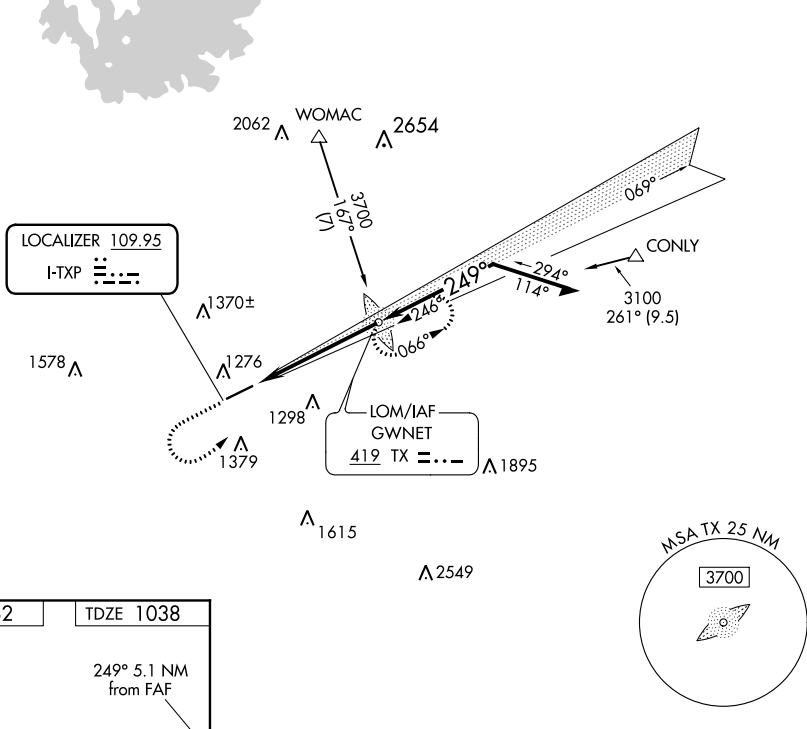


LOC I-TXP 109.95	APP CRS 249°	Rwy ldg TDZE 6001 1038	Apt Elev 1062
----------------------------	------------------------	--	-------------------------

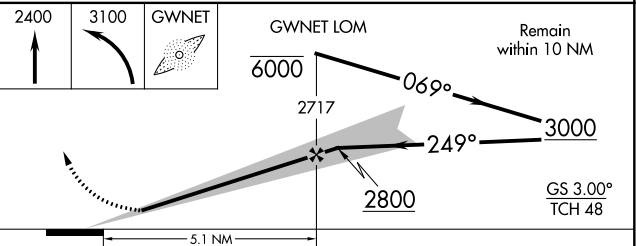
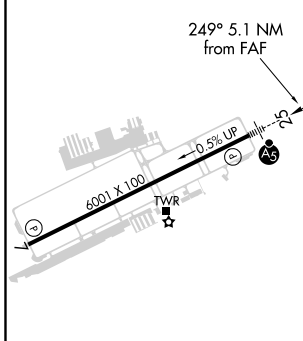
ILS or LOC RWY 25

GWINNETT COUNTY-BRISCOE FLD (LZU)

ADF or RADAR required.				MALSR 		MISSED APPROACH: Climb to 2400 then climbing left turn to 3100 direct GWNET LOM and hold.	
For inop ALS, increase S-LOC 25 Cat C/D visibility to 1 3/8 SM.							
ATIS 132.275	ATLANTA APP CON 126.975 239.275	GWINNETT TOWER * 124.1 (CTAF)	GND CON 121.8	CLNC DEL 121.8	CLNC DEL 134.0 (When twr closed)	UNICOM 123.05	



ELEV 1062	TDZE 1038
-----------	-----------



CATEGORY	A	B	C	D
S-ILS 25	1238-1/2		200 (200-1/2)	
S-LOC 25	1500-1/2	462 (500-1/2)	1500-1	462 (500-1)
<input checked="" type="checkbox"/> CIRCLING	1640-1	578 (600-1)	1680-1 3/4 618 (700-1 3/4)	1700-2 638 (700-2)

SE-4, 07 OCT 2021 to 04 NOV 2021

SE-4, 07 OCT 2021 to 04 NOV 2021