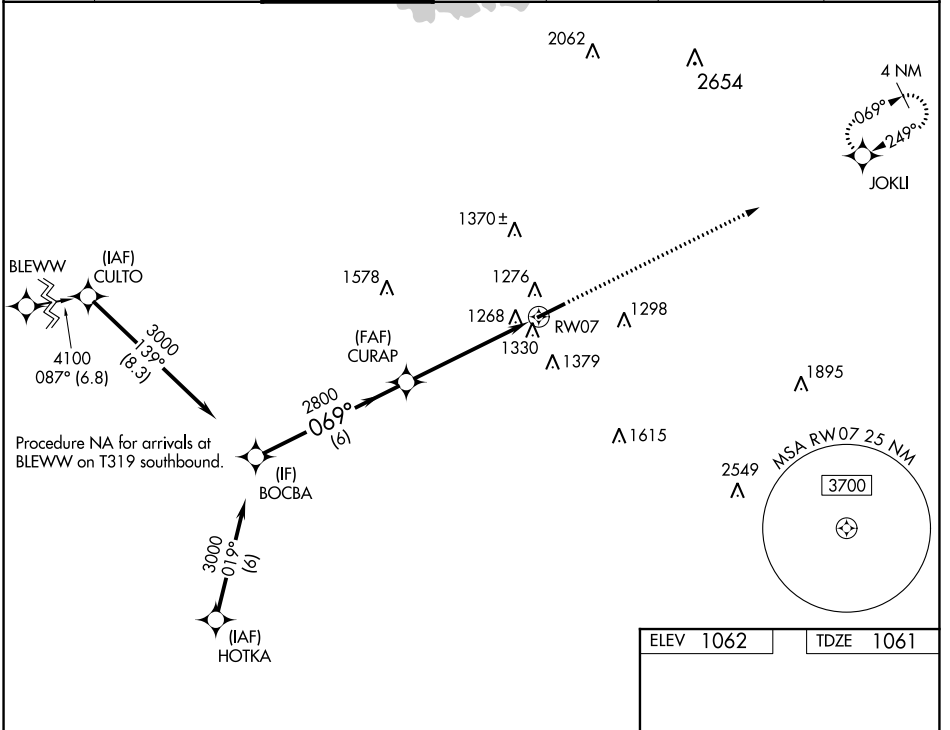


WAAS CH 97621 W07A	APP CRS 069°	Rwy Idg TDZE Apt Elev	6001 1061 1062
--	------------------------	-----------------------------	---

RNAV (GPS) RWY 7

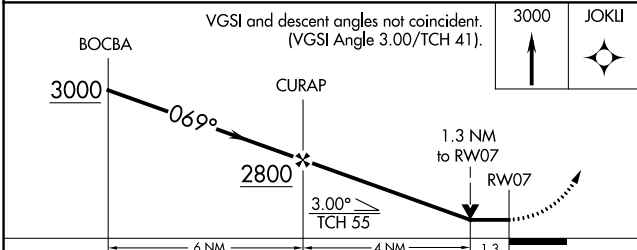
GWINNETT COUNTY-BRISCOE FLD (LZU)

RNP APCH:		MISSED APPROACH: Climb to 3000 direct JOKLI and hold.				
ATIS 132.275	ATLANTA APP CON 126.975 239.275	GWINNETT TOWER * 124.1 (CTAF)	GND CON 121.8	CLNC DEL 121.8	CLNC DEL 134.0 (When twr closed)	UNICOM 123.05



SE-4, 07 OCT 2021 to 04 NOV 2021

SE-4, 07 OCT 2021 to 04 NOV 2021



CATEGORY	A	B	C	D
LP MDA	1520-1	459 (500-1)	1520-1 $\frac{3}{8}$	459 (500-1 $\frac{3}{8}$)
LNVA MDA	1580-1	519 (600-1)	1580-1 $\frac{3}{8}$	519 (600-1 $\frac{3}{8}$)
CIRCLING	1640-1	578 (600-1)	1680-1 $\frac{3}{4}$ 618 (700-1 $\frac{3}{4}$)	1700-2 638 (700-2)

ELEV 1062	TDZE 1061
-----------	-----------

HIRL Rwy 7-25