

WAAS CH 40237 W14A	APP CRS 141°	Rwy Idg 3851 TDZE 1117 Apt Elev 1122
--	------------------------	---

RNAV (GPS) RWY 14

WEBSTER CITY MUNI (EBS)

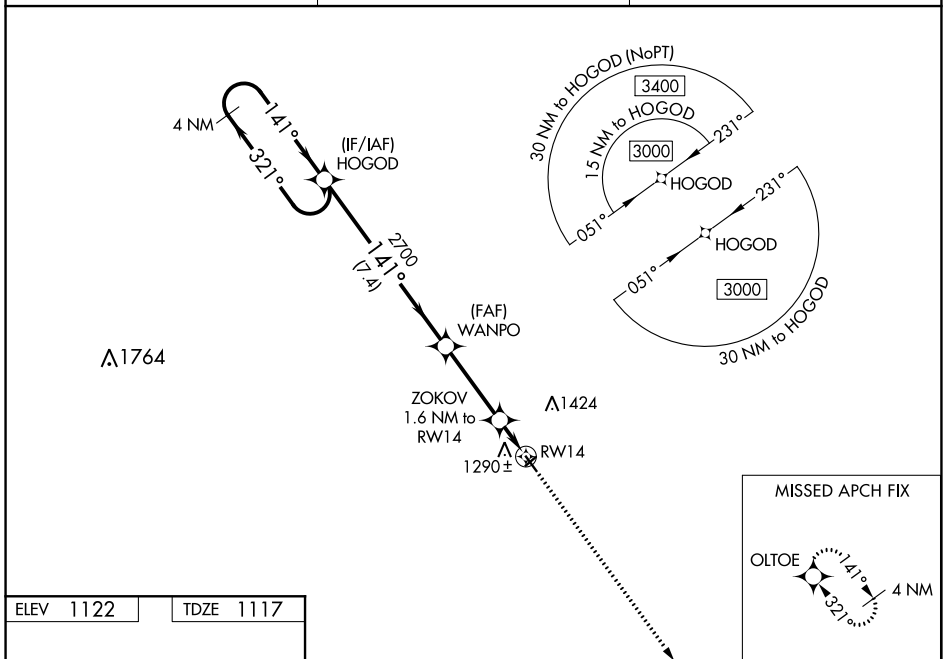
⚠ Baro-VNAV NA when using Clarion altimeter setting. For uncompensated Baro-VNAV systems, LNAV/VNAV NA below -17°C (2°F) or above 54°C (130°F). DME/DME RNP-0.3 NA. When local altimeter setting not received, use Clarion altimeter setting and increase all DAs 49 feet, and all MDA 60 feet; increase LNAV/VNAV all Cats visibility 1/8 mile. Helicopter visibility reduction below 3/4 SM NA.

MISSED APPROACH: Climb to 3000 direct OLT0E and hold.

AWOS-3
127.825

MINNEAPOLIS CENTER
134.0 288.3

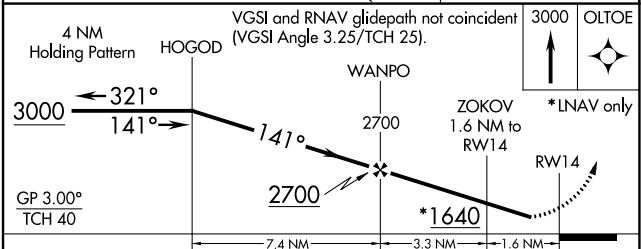
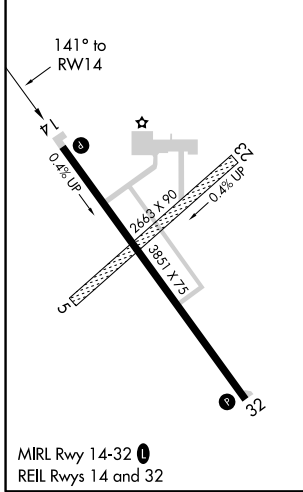
UNICOM
122.8 (CTAF) 0



NC-3, 07 OCT 2021 to 04 NOV 2021

NC-3, 07 OCT 2021 to 04 NOV 2021

ELEV 1122	TDZE 1117
------------------	------------------



CATEGORY	A	B	C	D
LPV DA	1367-1	250 (300-1)		NA
LNAV/VNAV DA	1463-1¼	346 (400-1¼)		NA
LNAV MDA	1540-1	423 (500-1)		NA
C CIRCLING	1600-1	478 (500-1)		NA