

WAAS CH 90516 W32A	APP CRS 321°	Rwy Idg 3851 TDZE 1122 Apt Elev 1122
--	------------------------	---

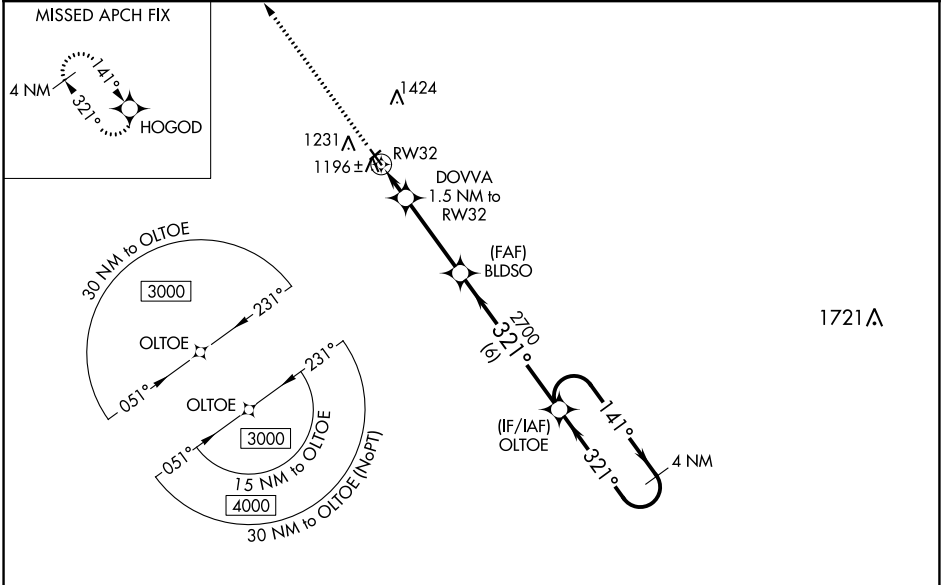
RNAV (GPS) RWY 32

WEBSTER CITY MUNI (EBS)

⚠ For uncompensated Baro-VNAV systems, LNAV/VNAV NA below -17°C (2°F) or above 54°C (130°F). DME/DME RNP-0.3 NA. When local altimeter setting not received, use Clarion altimeter setting and increase all DA 49 feet and all MDA 60 feet. Baro-VNAV and VDP NA when using Clarion altimeter setting. Helicopter visibility reduction below 3/4 SM NA.

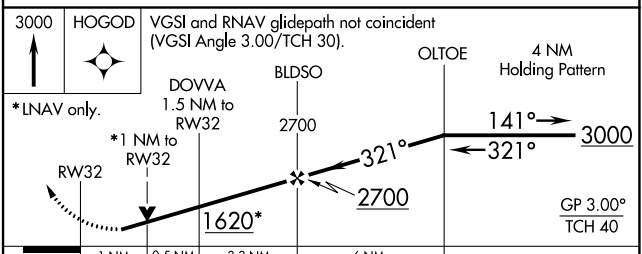
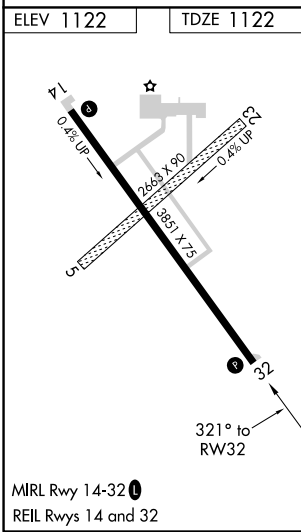
MISSED APPROACH: Climb to 3000 direct HOGOD and hold.

AWOS-3 127.825	MINNEAPOLIS CENTER 134.0 288.3	UNICOM 122.8 (CTAF) 0
--------------------------	--	---------------------------------



NC-3, 07 OCT 2021 to 04 NOV 2021

NC-3, 07 OCT 2021 to 04 NOV 2021



CATEGORY	A	B	C	D
LPV DA	1372-1	250 (300-1)		NA
LNAV/VNAV DA	1372-1	250 (300-1)		NA
LNAV MDA	1460-1	338 (400-1)		NA
C CIRCLING	1600-1	478 (500-1)		NA