

LOC I-TYQ 111.3	APP CRS 002°	Rwy Idg 5500
		TDZE 922
		Apt Elev 922

ILS or LOC RWY 36

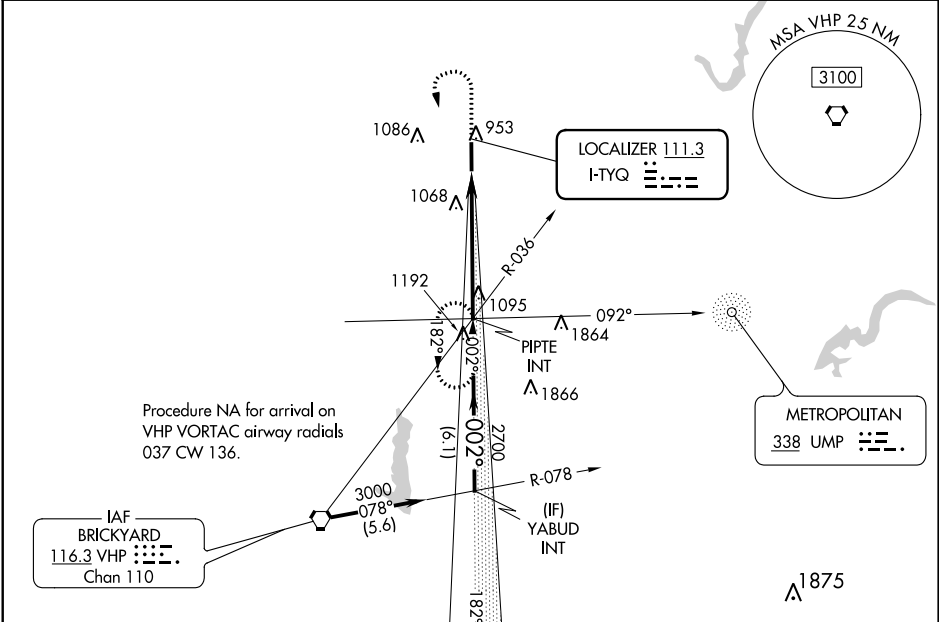
INDIANAPOLIS EXEC (TYQ)

ADF required for holding.

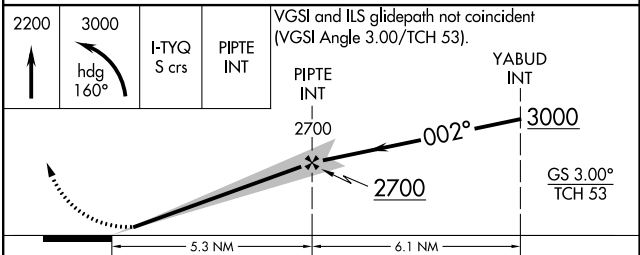
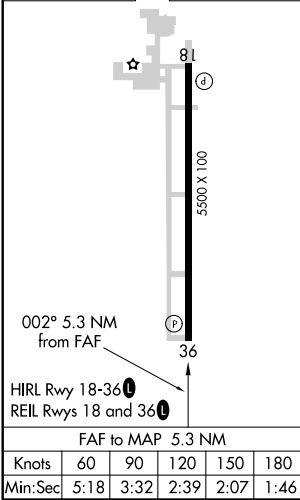
NA Autopilot coupled approach NA below 1900. When local altimeter setting not received, use Indianapolis Intl altimeter setting and increase DA to 1184 feet and all visibilities 1/8 SM, increase all MDAs 80 feet and visibility Cats C and D, and Circling Cat C visibility 1/4 SM.

MISSED APPROACH: Climb to 2200 then climbing left turn to 3000 on heading 160° and on I-TYQ LOC south course (182°) to PIPETE INT and hold.

AWOS-3PT 120.725	INDIANAPOLIS APP CON 124.65 127.15 317.8	GCO 121.725	UNICOM 123.05 (CTAF)
----------------------------	--	-----------------------	--------------------------------



ELEV 922	TDZE 922
----------	----------



CATEGORY	A	B	C	D
S-ILS 36	1122-3/4 200 (200-3/4)			
S-LOC 36	1400-1	478 (500-1)	1400-1 3/8	478 (500-1 3/8)
<input checked="" type="checkbox"/> CIRCLING	1400-1	478 (500-1)	1400-1 1/2	1480-2
			478 (500-1 1/2)	558 (600-2)

EC-2, 07 OCT 2021 to 04 NOV 2021

EC-2, 07 OCT 2021 to 04 NOV 2021