

(LCH5.LCH) 21112

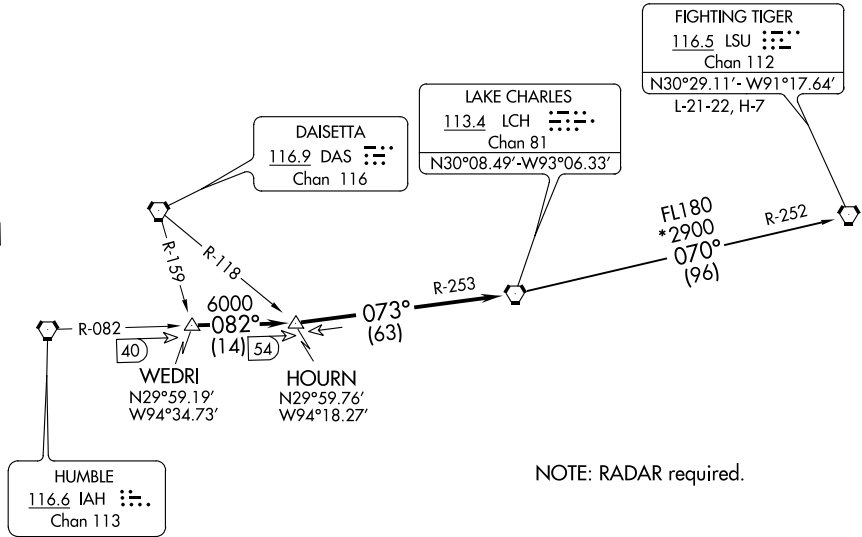
AL-5457 (FAA)

DAVID WAYNE HOOKS MEML (DWH)  
HOUSTON, TEXAS

# LAKE CHARLES FIVE DEPARTURE

ATIS  
128.375  
CLNC DEL  
119.45  
GND CON  
121.8 239.0  
HOOKS TOWER\*  
127.4 354.1 (EAST)  
118.4 (CTAF) 354.1 (WEST)  
HOUSTON DEP CON  
119.7 281.4

**TOP ALTITUDE:  
ASSIGNED BY ATC**



NOTE: RADAR required.

### TAKEOFF MINIMUMS

Rwy 17L, 35R NA - Environmental.  
Waterway 17, 35 NA - Air Traffic.  
Rwy 17R, 35L Standard.

NOTE: Chart not to scale.



### DEPARTURE ROUTE DESCRIPTION

When entering controlled airspace, climb on assigned heading for RADAR vectors to WEDRI INT. Maintain ATC assigned altitude. Expect filed altitude 10 minutes after departure, thence. . . .

. . . .on IAH R-082 to Hourn INT, then on LCH R-253 to LCH VORTAC.

FIGHTING TIGERS TRANSITION (LCH5.LSU): From over LCH VORTAC on LCH R-070 and LSU R-252 to LSU VORTAC.

LAKE CHARLES FIVE DEPARTURE  
(LCH5.LCH) 22JUN17

HOUSTON, TEXAS  
DAVID WAYNE HOOKS MEML (DWH)

SC-5, 07 OCT 2021 to 04 NOV 2021

SC-5, 07 OCT 2021 to 04 NOV 2021