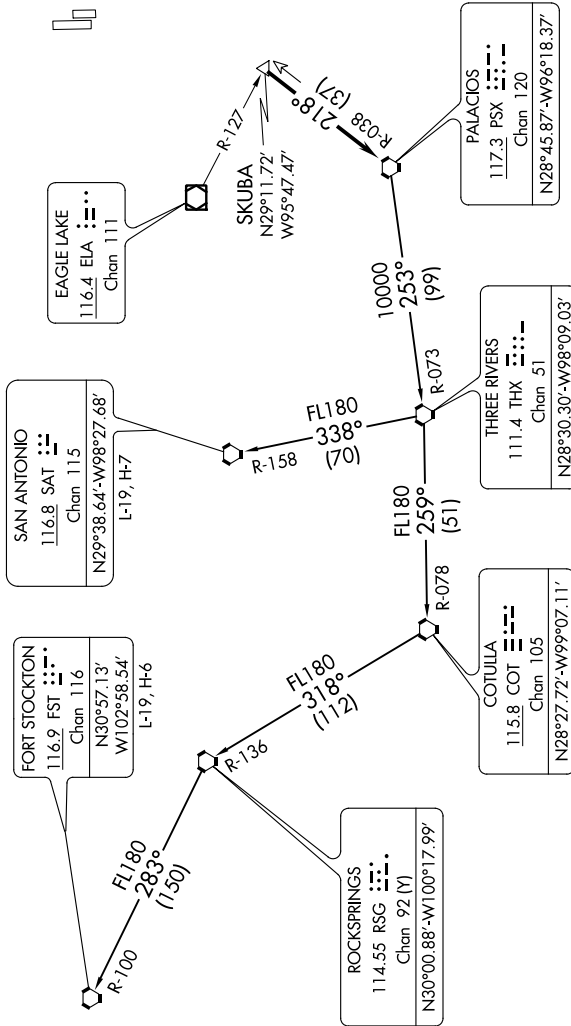


TOP ALTITUDE:
ASSIGNED BY ATC

TAKEOFF MINIMUMS
Rwys 17L, 35R: NA - Environmental.
Waterways 17, 35: NA - Air Traffic.
Rwys 17R, 35L: Standard.

- ATIS 128.375
- CINCL DEL 119.45
- GND CON 121.8 239.0
- HOOKS TOWER* 127.4 354.1 (EAST)
- 118.4 (CTAF) 354.1 (WEST)
- HOUSTON DEP CON 119.7 281.4 (Rwys 35L/R)
- 123.8 257.7 (Rwys 17L/R)



SC-5, 07 OCT 2021 to 04 NOV 2021

(NARRATIVE ON FOLLOWING PAGE)

SC-5, 07 OCT 2021 to 04 NOV 2021

NOTE: RADAR required.
NOTE: Chart not to scale.