

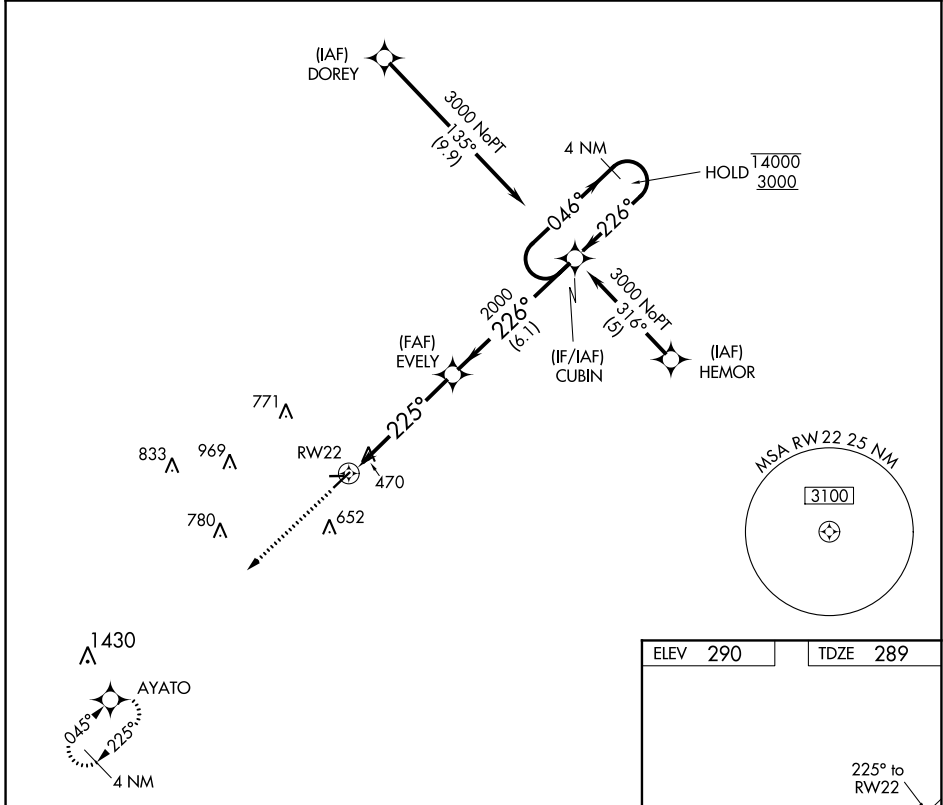
APP CRS	Rwy Idg	4352
225°	TDZE	289
	Apt Elev	290

RNAV (GPS) RWY 22

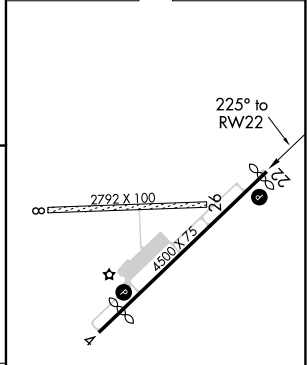
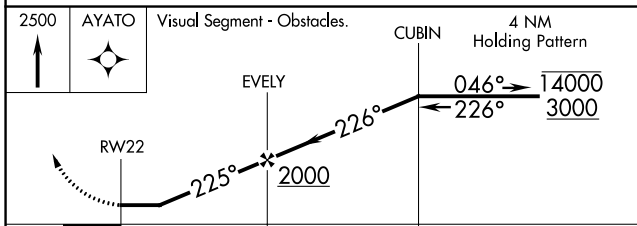
KIRK FLD (PGR)

RNP APCH - GPS	MISSED APPROACH: Climb to 2500 direct AYATO and hold.
<p>NA Circling NA to Rwys 8 and 26. Rwy 22 helicopter visibility reduction below 1/2 SM NA. Use Jonesboro altimeter setting; when not received, use Walnut Ridge altimeter setting and increase all MDA 20 feet.</p>	

JBR ASOS 118.525	MEMPHIS CENTER 120.075 289.4	UNICOM 122.8 (CTAF) 0
----------------------------	--	---------------------------------



ELEV 290	TDZE 289
----------	----------



CATEGORY	A	B	C	D
LNVA MDA	820-1¼	531 (600-1¼)	NA	
C CIRCLING	860-1¼ 570 (600-1¼)	1000-1¼ 710 (800-1¼)	NA	

MIRL Rwy 4-22 0
REIL Rwys 4 and 22 0

SC-1, 07 OCT 2021 to 04 NOV 2021

SC-1, 07 OCT 2021 to 04 NOV 2021