

WAAS CH 69304 W31A	APP CRS 308°	Rwy Idg TDZE Apt Elev	4300 897 900
--	------------------------	-----------------------------	---

RNAV (GPS) RWY 31

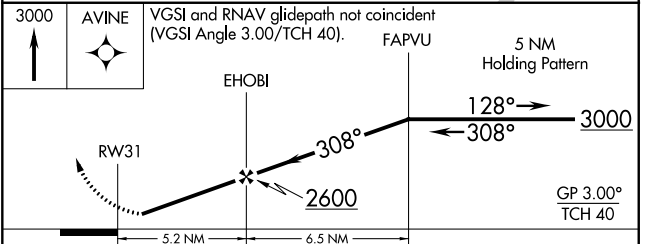
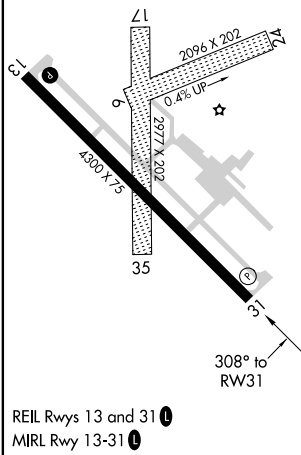
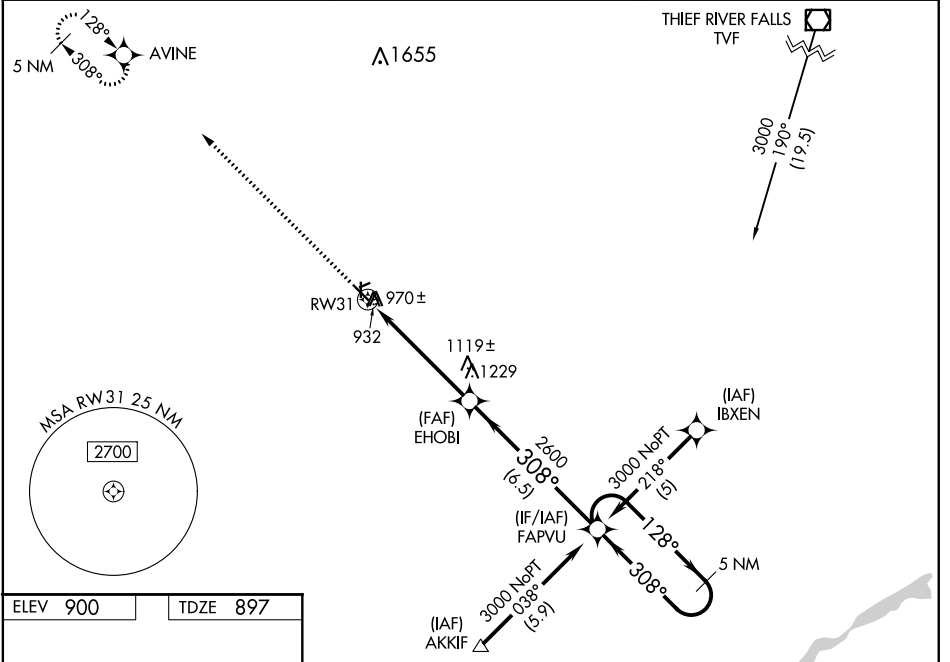
CROOKSTON MUNI KIRKWOOD FLD (CKN)

RNP APCH.

⚠ Baro-VNAV NA when using Grand Forks altimeter setting. For uncompensated Baro-VNAV systems, LNAV/VNAV NA below -16°C (4°F) or above 54°C (130°F). If local altimeter setting not received, use Grand Forks altimeter setting and increase all DAs 62 feet and all MDAs 80 feet. Visibility reduction by helicopters NA. Circling Rwy 6, 24, 17, 35 NA at night.

ⓘ MISSED APPROACH: Climb to 3000 direct AVINE and hold.

AWOS-3 126.425	GRAND FORKS APP CON* 118.1 318.1	UNICOM 122.7 (CTAF) ⓘ
--------------------------	--	---------------------------------



CATEGORY	A	B	C	D
LPV DA	1157-1 260 (300-1)			NA
LNAV/VNAV DA	1320-1½ 423 (500-1½)			NA
LNAV MDA	1380-1	483 (500-1)	1380-1¼ 483 (500-1¼)	NA
CIRCLING	1380-1	480 (500-1)	1380-1½ 480 (500-1½)	NA

NC-1, 07 OCT 2021 to 04 NOV 2021

NC-1, 07 OCT 2021 to 04 NOV 2021