

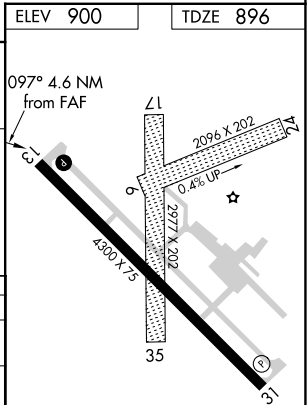
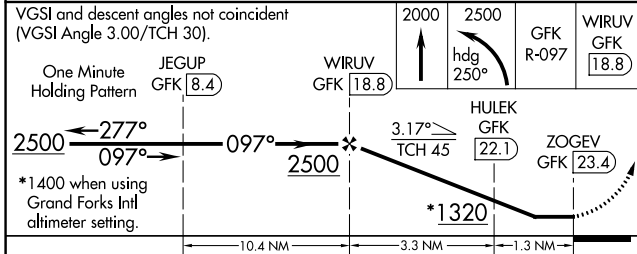
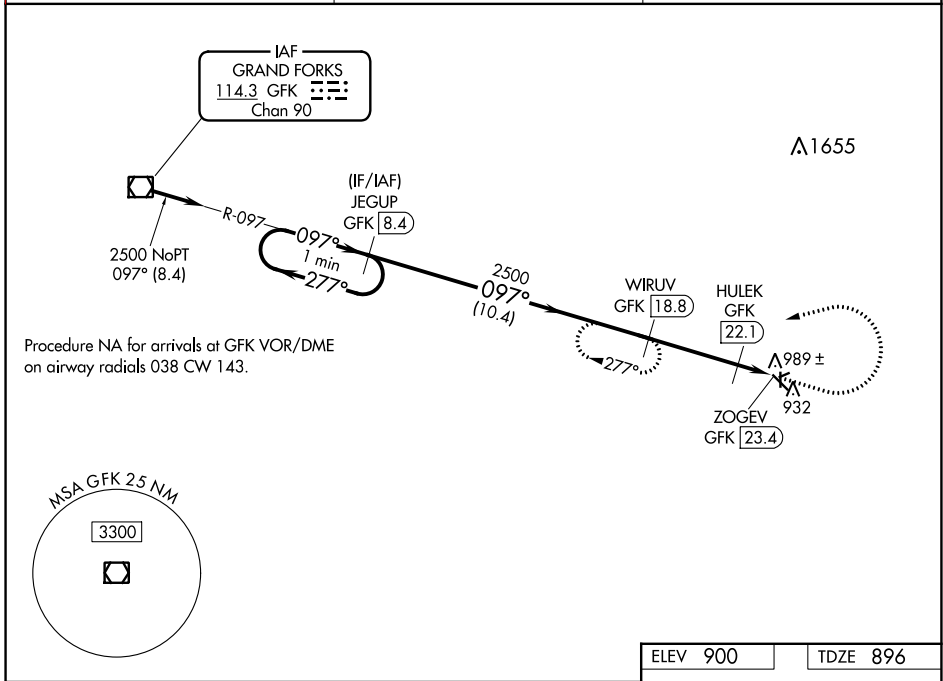
VOR/DME GFK 114.3 Chan 90	APP CRS 097°	Rwy Idg TDZE Apt Elev	4300 896 900
---	------------------------	-----------------------------	---

VOR/DME RWY 13
CROOKSTON MUNI KIRKWOOD FLD (CKN)

⚠ When local altimeter setting not received, use Grand Forks Intl altimeter setting. Circling Rwsy 6, 24, 17, 35 NA at night.

MISSED APPROACH: Climb to 2000 then climbing left turn to 2500 heading 250° and GFK VOR/DME R-097 to WIRUV/GFK 18.8 DME and hold.

AWOS-3 126.425	GRAND FORKS APP CON* 118.1 318.1	UNICOM 122.7 (CTAF) 0
--------------------------	--	---------------------------------



CATEGORY	A	B	C	D
S-13	1240-1 344 (400-1)			NA
CIRCLING	1320-1 420 (500-1)	1360-1 460 (500-1)	1360-1½ 460 (500-1½)	NA
GRAND FORKS INTL ALTIMETER MINIMUMS				
S-13	1320-1 424 (500-1)		1320-1¼ 424 (500-1¼)	NA
CIRCLING	1400-1 500 (500-1)		1400-1½ 500 (500-1½)	NA

REIL Rwsy 13 and 31 0
MIRL Rwy 13-31 0

NC-1, 07 OCT 2021 to 04 NOV 2021

NC-1, 07 OCT 2021 to 04 NOV 2021