

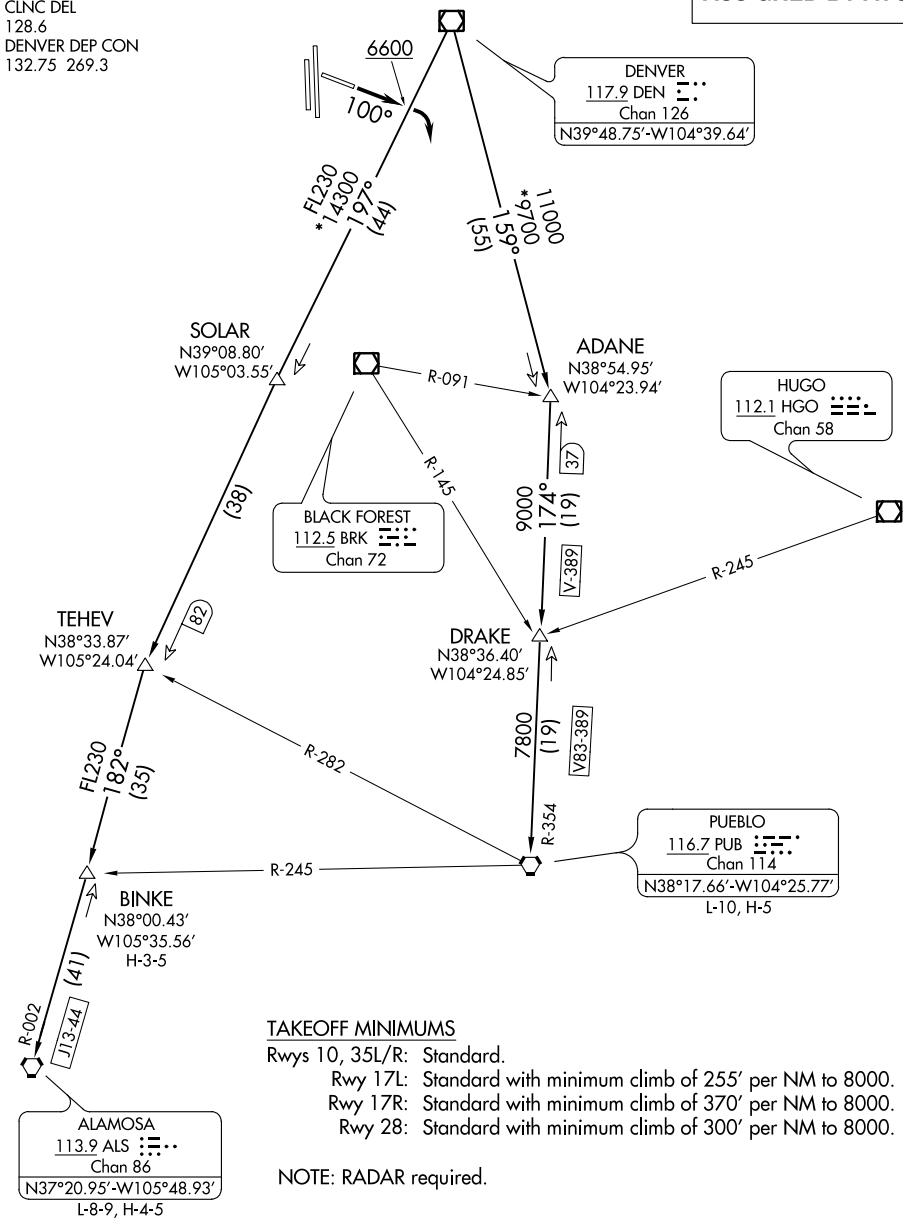
PIKES TWO DEPARTURE

AL-5715 (FAA)

CENTENNIAL (APA)
DENVER, COLORADO

ATIS
120.3
CLNC DEL
128.6
DENVER DEP CON
132.75 269.3

**TOP ALTITUDE:
ASSIGNED BY ATC**



TAKEOFF MINIMUMS

- Rwys 10, 35L/R: Standard.
- Rwy 17L: Standard with minimum climb of 255' per NM to 8000.
- Rwy 17R: Standard with minimum climb of 370' per NM to 8000.
- Rwy 28: Standard with minimum climb of 300' per NM to 8000.

NOTE: RADAR required.

NOTE: Chart not to scale.

(NARRATIVE ON FOLLOWING PAGE)

SW-1, 07 OCT 2021 to 04 NOV 2021

SW-1, 07 OCT 2021 to 04 NOV 2021