

WAAS CH 58012 W27A	APP CRS 270°	Rwy ldg 5445
		TDZE 588
		Apt Elev 590

RNAV (GPS) RWY 27

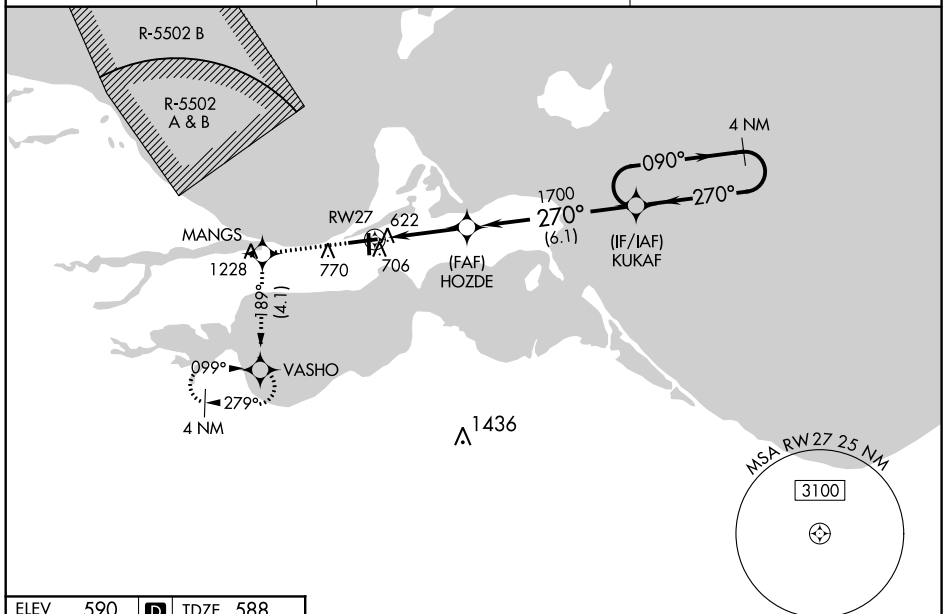
ERIE-OTTAWA INTL (PCW)

RNP APCH.

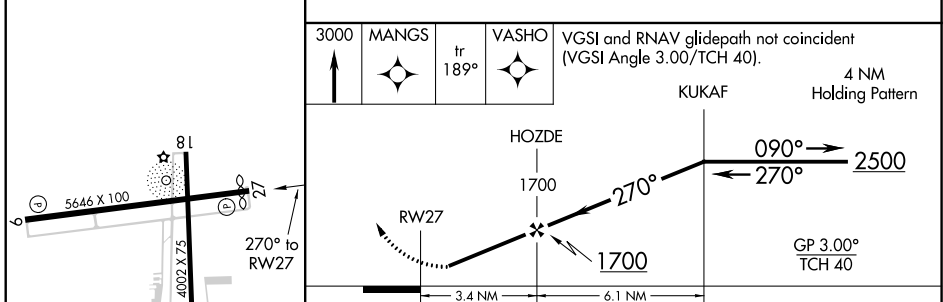
⚠ Baro-VNAV NA when using Toledo Executive altimeter setting. For uncompensated Baro-VNAV systems, LNAV/VNAV NA below -16°C (4°F) or above 54°C (130°F). Rwy 27 helicopter visibility reduction below ¼ SM NA. When local altimeter setting not received, use Toledo Executive altimeter setting and increase all DA/MDA 80 feet and all visibilities ¼ mile. Circling Rwy 18, 36 NA at night.

⚠ MISSED APPROACH: Climb to 3000 direct MANGS and on track 189° to VASHO and hold, continue climb-in-hold to 3000.

AWOS-3 118.775	CLEVELAND APP CON 126.35 346.325	UNICOM 122.8 (CTAF) 0
--------------------------	--	---------------------------------



ELEV 590	D	TDZE 588
----------	----------	----------



CATEGORY	A	B	C	D
LPV DA	910-1 322 (400-1 1/8)			
LNAV/VNAV DA	956-1 368 (400-1 1/4)			
LNAV MDA	980-1	392 (400-1)	980-1 1/8	392 (400-1 1/8)
C CIRCLING	1140-1	550 (600-1)	1180-1 1/2	1580-3
			590 (600-1 1/2)	990 (1000-3)

HIRL Rwy 9-27 **0**
MIRL Rwy 18-36 **0**
REIL Rwy 9 and 27 **0**

EC-2, 07 OCT 2021 to 04 NOV 2021

EC-2, 07 OCT 2021 to 04 NOV 2021