

(DAWNN1.DAWNN) 20086  
**DAWNN ONE DEPARTURE**

AL-5733 (FAA)

EAGLE CREEK AIRPARK (EYE)  
 INDIANAPOLIS, INDIANA

**TOP ALTITUDE:  
 ASSIGNED BY ATC**

ASOS  
 121.575  
 CLNC DEL  
 128.6  
 INDIANAPOLIS DEP CON  
 119.05 317.8

BRICKYARD  
 116.3 VHP  
 Chan 110

TERRE HAUTE  
 115.3 TTH  
 Chan 100

HOOSIER  
 110.2 OOM  
 Chan 39

SNEVA  
 RADAR  
 N39°21.43'  
 W86°18.96'

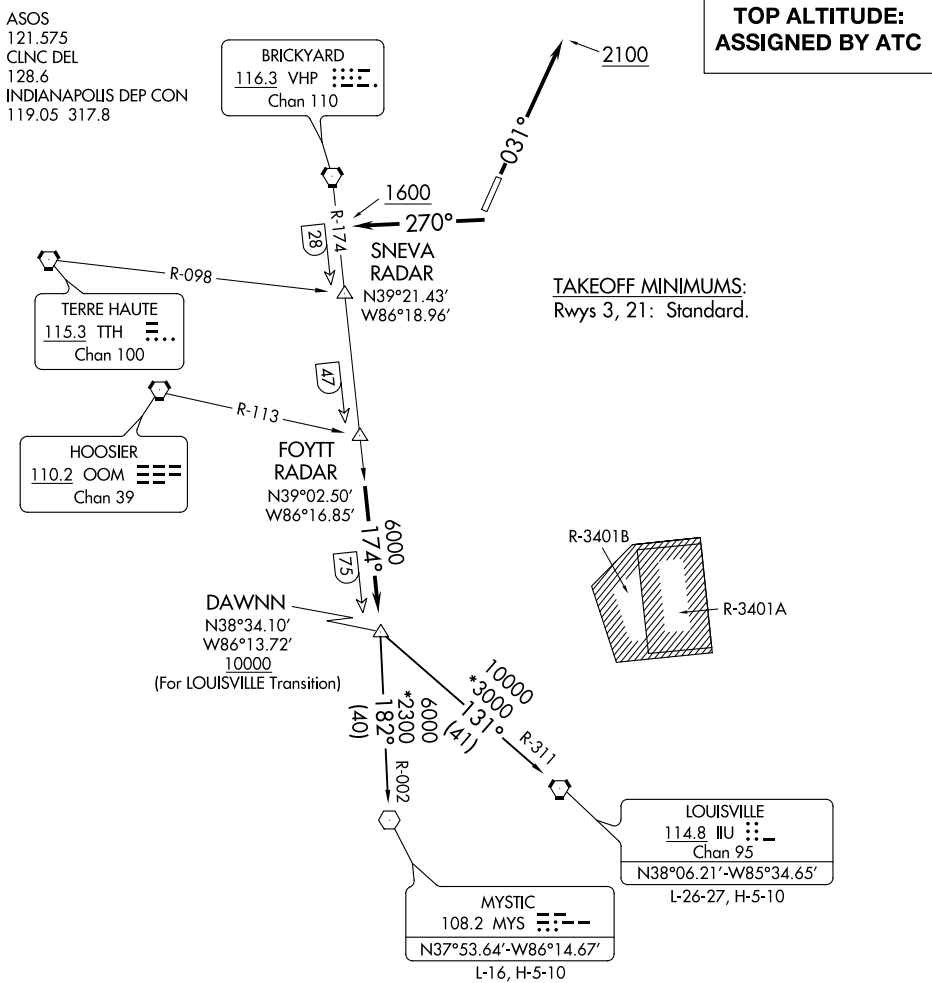
FOYTT  
 RADAR  
 N39°02.50'  
 W86°16.85'

DAWNN  
 N38°34.10'  
 W86°13.72'  
 10000  
 (For LOUISVILLE Transition)

MYSTIC  
 108.2 MYS  
 N37°53.64'-W86°14.67'  
 L-16, H-5-10

LOUISVILLE  
 114.8 IU  
 Chan 95  
 N38°06.21'-W85°34.65'  
 L-26-27, H-5-10

**TAKEOFF MINIMUMS:**  
 Rwy 3, 21: Standard.



EC-2, 07 OCT 2021 to 04 NOV 2021

EC-2, 07 OCT 2021 to 04 NOV 2021

- NOTE: RADAR required.
- NOTE: Select appropriate localizer/DME frequency/channel prior to departure.
- NOTE: Turbojets accelerate to 250K until reaching 10000, if unable advise ATC.
- NOTE: Assigned to aircraft with a requested altitude of 11000 or above.

(NARRATIVE ON FOLLOWING PAGE)

NOTE: Chart not to scale.