

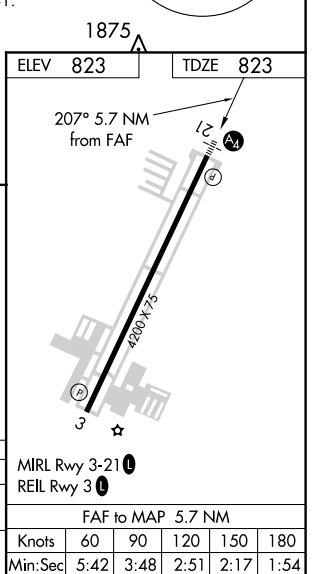
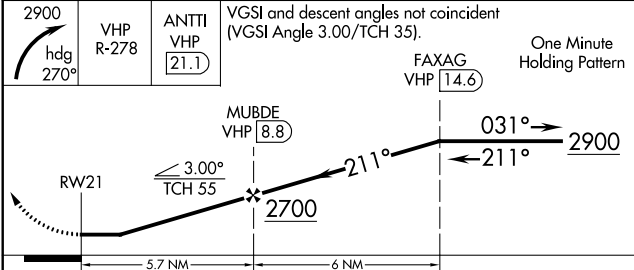
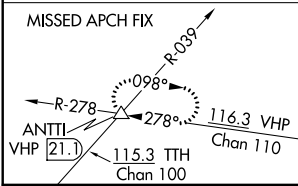
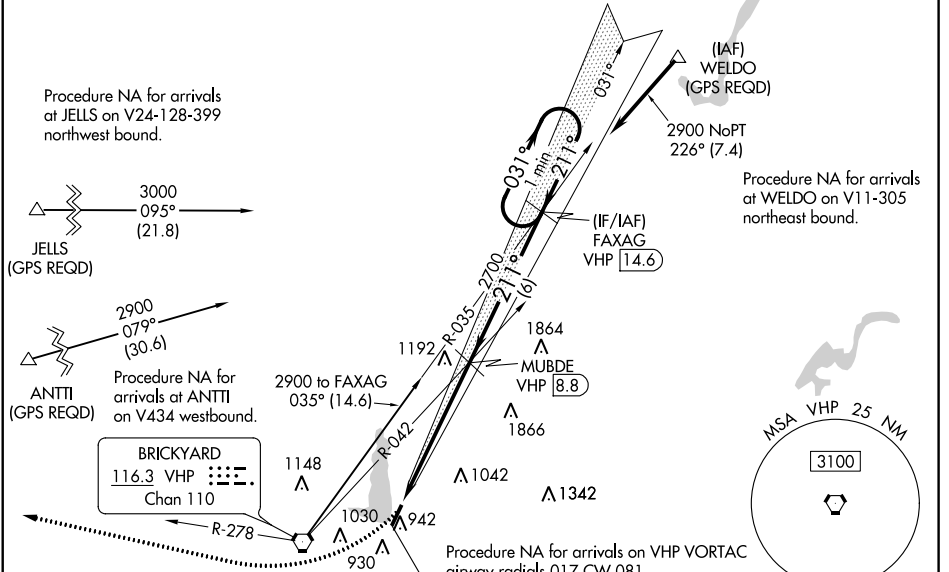
LOC I-EYE 111.5	APP CRS 211°	Rwy Idg 4200
		TDZE 823
		Apt Elev 823

LOC RWY 21

EAGLE CREEK AIRPARK (EYE)

<p>NA Helicopter visibility reduction below 3/4 SM NA. When local altimeter setting not received, use Indianapolis Intl altimeter setting and increase all MDA 20 feet. DME required. For inoperative MALS, increase Cat C visibility to 1 1/2 mile.</p>	<p>MALS </p>	<p>MISSED APPROACH: Climbing right turn to 2900 on heading 270° and VHP R-278 to ANTTI INT/VHP 21.1 DME and hold.</p>
---	--------------------------	--

<p>ASOS 121.575</p>	<p>INDIANAPOLIS APP CON 119.05 317.8</p>	<p>CLNC DEL 128.6</p>	<p>UNICOM 122.8 (CTAF) 0</p>
---------------------------------------	--	---	--



CATEGORY	A	B	C	D
S-21	1340-3/4	517 (600-3/4)	1340-1 1/4 517 (600-1 1/4)	NA
C CIRCLING	1340-1	517 (600-1)	1500-2 677 (700-2)	NA

EC-2, 07 OCT 2021 to 04 NOV 2021

EC-2, 07 OCT 2021 to 04 NOV 2021