

WAAS CH <b>40116</b> W15A	APP CRS <b>154°</b>	Rwy Idg <b>4000</b> TDZE <b>928</b> Apt Elev <b>928</b>
---------------------------------	------------------------	---

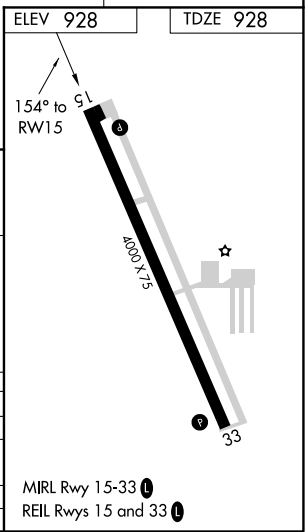
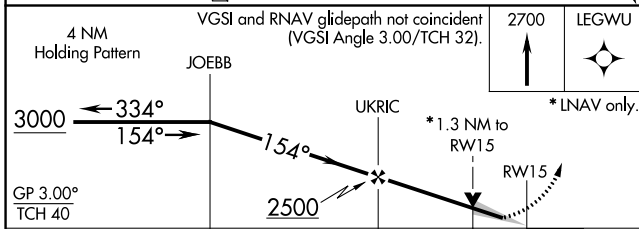
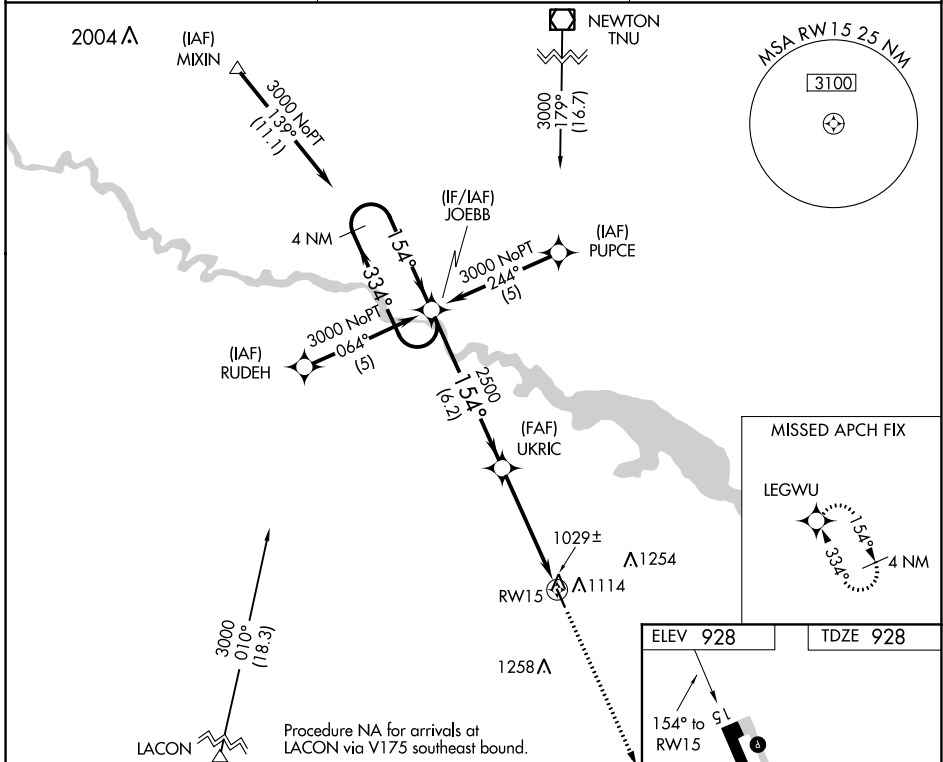
# RNAV (GPS) RWY 15

KNOXVILLE MUNI (OXV)

**⚠** DME/DME RNP-0.3 NA. For uncompensated Baro-VNAV systems, LNAV/VNAV NA below -16°C (4°F) or above 54°C (130°F). Baro-VNAV and VDP NA when using Pella altimeter setting. When local altimeter setting not received, use Pella altimeter setting and increase all DA 29 feet, all MDA 40 feet and LNAV/VNAV all Cats visibility ¼ mile.

**⚠** MISSED APPROACH: Climb to 2700 direct LEGWU and hold.

AWOS-3 <b>119.775</b>	DES MOINES APP CON <b>123.9 307.15</b>	UNICOM <b>122.8 (CTAF) 0</b>
--------------------------	---	---------------------------------



CATEGORY	A	B	C	D
LPV DA	1242-1¼	314 (400-1¼)		NA
LNAV/VNAV DA	1299-1¼	371 (400-1¼)		NA
LNAV MDA	1360-1	432 (500-1)		NA
CIRCLING	1480-1	552 (600-1)		NA

NC-3, 07 OCT 2021 to 04 NOV 2021

NC-3, 07 OCT 2021 to 04 NOV 2021