

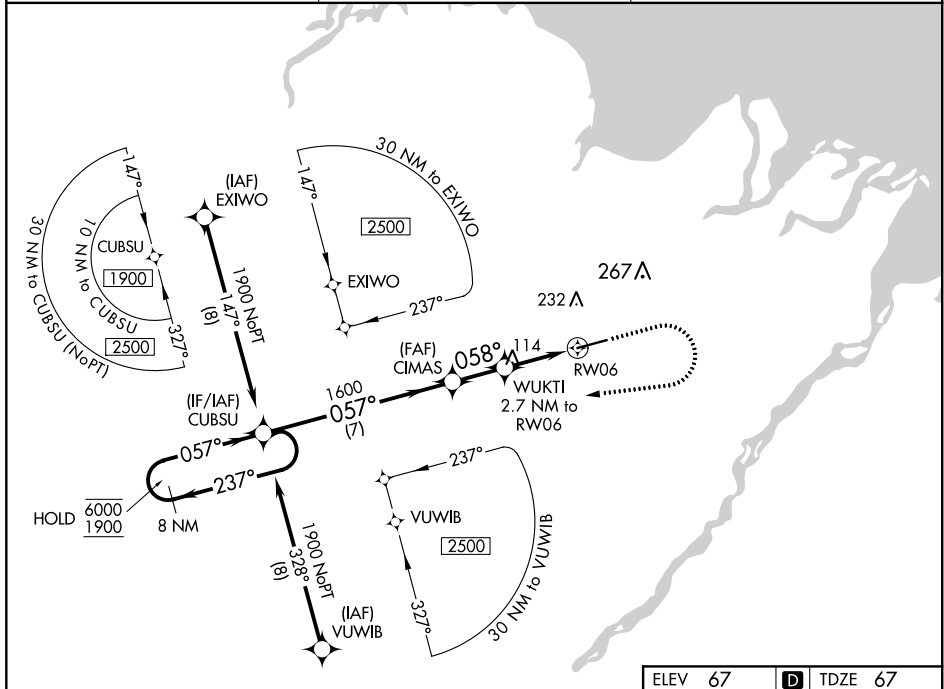
WAAS CH <b>49103</b> <b>W06A</b>	APP CRS <b>058°</b>	Rwy Idg <b>6500</b> TDZE <b>67</b> Apt Elev <b>67</b>
--	------------------------	---

# RNAV (GPS) Z RWY 6

DEADHORSE (SCC) (PASC)

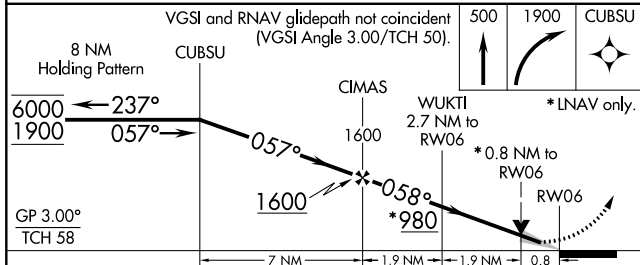
RNP APCH.	MALSRL	MISSED APPROACH: Climb to 500 then climbing right turn to 1900 direct CUBSU and hold.
<p>▼ For uncompensated Baro-VNAV systems, LNAV/VNAV NA below -17°C or above 54°C. For inop ALS, increase LPV Cat E visibility to RVR 4000, and increase LNAV/VNAV all Cats and LNAV Cats C/D/E visibility to RVR 4500. #RVR 1800 authorized with use of FD or AP or HUD to DA.</p>		

AFIS <b>118.4</b>	ANCHORAGE CENTER <b>134.4 370.9</b>	DEADHORSE RADIO <b>123.6 (CTAF)</b>
----------------------	--	--



AK, 07 OCT 2021 to 02 DEC 2021

AK, 07 OCT 2021 to 02 DEC 2021



ELEV 67	<b>D</b> TDZE 67
---------	------------------

CATEGORY	A	B	C	D	E
LPV DA#		267/24	200 (200-1/2)		
LNAV/VNAV DA		369/24	302 (400-1/2)		
LNAV MDA		380/24	313 (400-1/2)		
<b>C</b> CIRCLING	540-1	473 (500-1)	580-1 1/2 513 (600-1 1/2)	620-2	553 (600-2)

