

WAAS CH <b>81919</b> <b>W33A</b>	APP CRS <b>332°</b>	Rwy Idg TDZE Apt Elev	<b>3997</b> <b>730</b> <b>730</b>
--	------------------------	-----------------------------	---

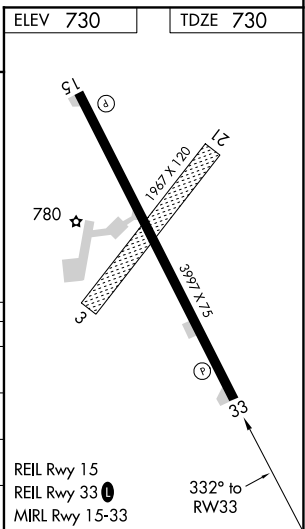
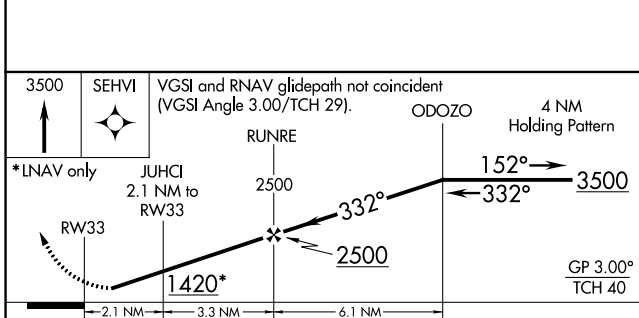
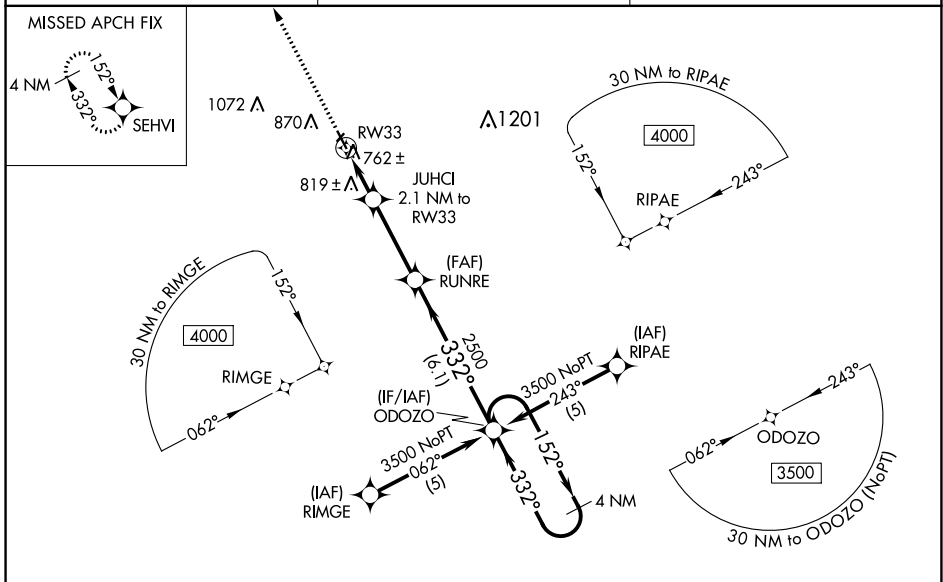
# RNAV (GPS) RWY 33

MOUNT PLEASANT MUNI (MPZ)

**⚠** Baro-VNAV NA when using Burlington altimeter setting. For uncompensated Baro-VNAV systems, LNAV/VNAV NA below -16°C (4°F) or above 54°C (130°F). DME/DME RNP-0.3 NA. Visibility reduction by helicopters NA. When VGSI inoperative, straight-in minimums NA at night. When local altimeter setting not received, use Burlington altimeter setting: increase LPV DA to 1031 feet, LNAV/VNAV DA to 1073 feet and all LNAV/VNAV visibilities ¼ mile; increase all MDA 60 feet, and LNAV and Circling Cat C visibility ¼ mile. Circling NA to Rwy 3/21.

**MISSED APPROACH:**  
Climb to 3500 direct SEHVI and hold.

AWOS-3 <b>119.325</b>	CHICAGO CENTER <b>135.6 316.1</b>	UNICOM <b>123.05 (CTAF) 0</b>
--------------------------	--------------------------------------	----------------------------------



CATEGORY	A	B	C	D
LPV DA		980-1 250 (300-1)		NA
LNAV/VNAV DA		1022-1 292 (300-1)		NA
LNAV MDA		1080-1 350 (400-1)		NA
CIRCLING	1220-1 490 (500-1)	1360-1 630 (700-1)	1360-1¾ 630 (700-1¾)	NA

NC-3, 07 OCT 2021 to 04 NOV 2021

NC-3, 07 OCT 2021 to 04 NOV 2021