

APP CRS	Rwy Idg	3498
025°	TDZE	641
	Apt Elev	641

RNAV (GPS) RWY 4

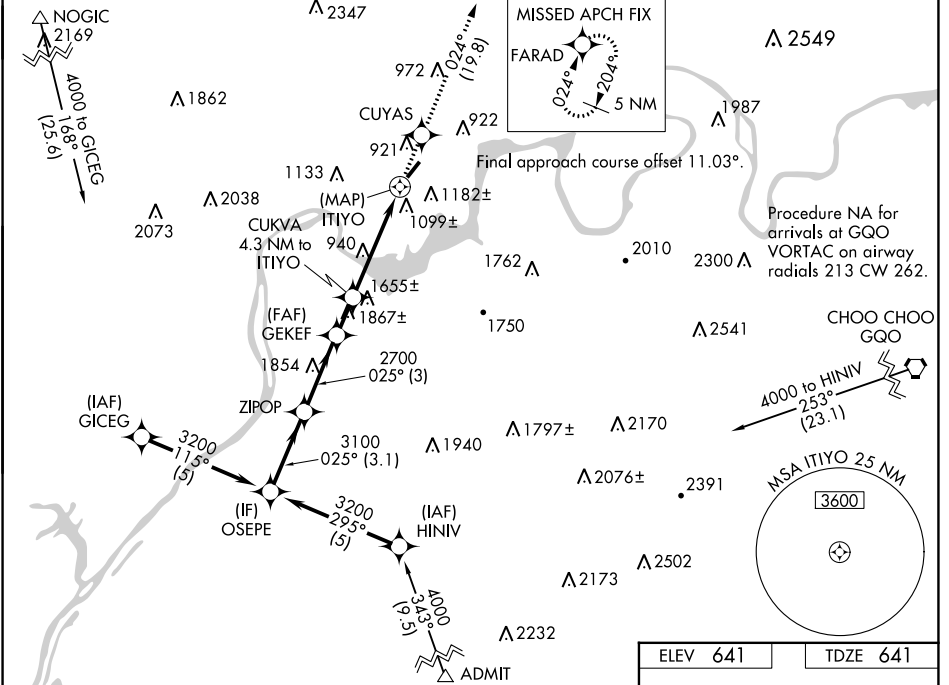
MARION COUNTY-BROWN FLD (A/P)

NA DME/DME RNP-0.3 NA. Obtain local altimeter setting on CTAF; when not received, use Chattanooga altimeter setting. Rwy 4, 22 helicopter visibility reduction below 1 SM NA. Procedure NA at night.

MISSED APPROACH: Climb to 4000 direct CUYAS and on track 024° to FARAD and hold.

CHATTANOOGA APP CON * **119.2 323.075**

UNICOM **122.8** (CTAF)



Visual Segment - Obstacles.				4000	CUYAS	tr 024°	FARAD
OSEPE	ZIPOP	GEKEF	CUKVA				
3200	3100	2700	2240				
3.1 NM		3 NM		1.5 NM		4.3 NM	
A		B		C		D	
LNVA MDA	1500-1 859 (900-1)	1500-1¼ 859 (900-1¼)	1500-2½ 859 (900-2½)	NA			
CIRCLING	1560-1¼ 919 (1000-1¼)	1840-1½ 1199 (1200-1½)	1860-3 1219 (1300-3)	NA			
CHATTANOOGA ALTIMETER SETTING MINIMUMS							
LNVA MDA	1540-1¼	899 (900-1¼)	1540-2¾ 899 (900-2¾)	NA			
CIRCLING	1620-1¼ 979 (1000-1¼)	1900-1½ 1259 (1300-1½)	1920-3 1279 (1300-3)	NA			

ELEV	641	TDZE	641
------	-----	------	-----

MIRL Rwy 4-22
REIL Rws 4 and 22

SE-1, 07 OCT 2021 to 04 NOV 2021

SE-1, 07 OCT 2021 to 04 NOV 2021