

APP CRS	Rwy Idg	5501
022°	TDZE	846
	Apt Elev	874

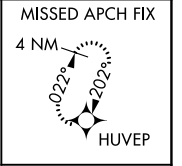
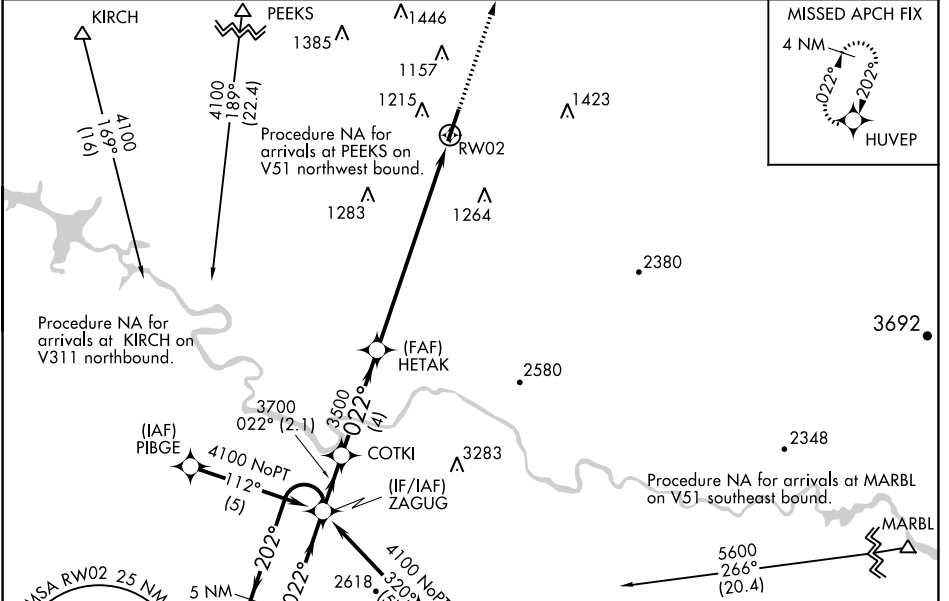
RNAV (GPS) RWY 2

MCMINN COUNTY (MMI)

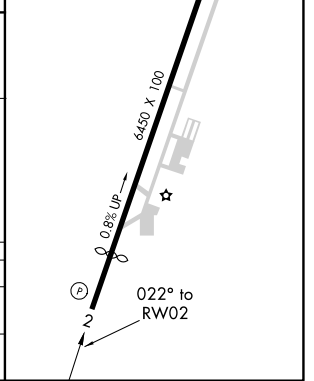
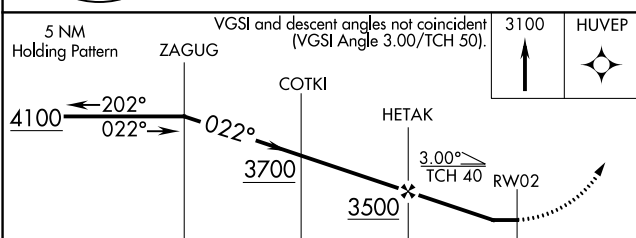
NA DME/DME RNP-0.3 NA. Night Landing: Rwy 2 NA. Helicopter visibility reduction below 1 SM NA. When local altimeter setting not received, use Mc Ghee Tyson altimeter setting and increase all MDAs 120 feet, and increase LNAV Cats C/D and Circling Cats A/C visibility ¼ SM.

MISSED APPROACH:
Climb to 3100 direct HUVEP and hold.

AWOS-3 125.425	KNOXVILLE APP CON 123.9 353.6	UNICOM 122.8 (CTAF)
---------------------------------	--	--------------------------------------



ELEV 874	TDZE 846
REIL Rwy 2 and 20	
MIRL Rwy 2-20	



CATEGORY	A	B	C	D
LNAV MDA	1600-1 754 (800-1)	1600-1¼ 754 (800-1¼)	1600-2¼ 754 (800-2¼)	1600-2½ 754 (800-2½)
CIRCLING	1600-1 726 (800-1)	1600-1¼ 726 (800-1¼)	1600-2¼ 726 (800-2¼)	1820-3 946 (1000-3)

SE-1, 07 OCT 2021 to 04 NOV 2021

SE-1, 07 OCT 2021 to 04 NOV 2021