

WAAS CH 45717 W20A	APP CRS 202°	Rwy Idg TDZE Apt Elev	6450 874 874
--	------------------------	-----------------------------	---

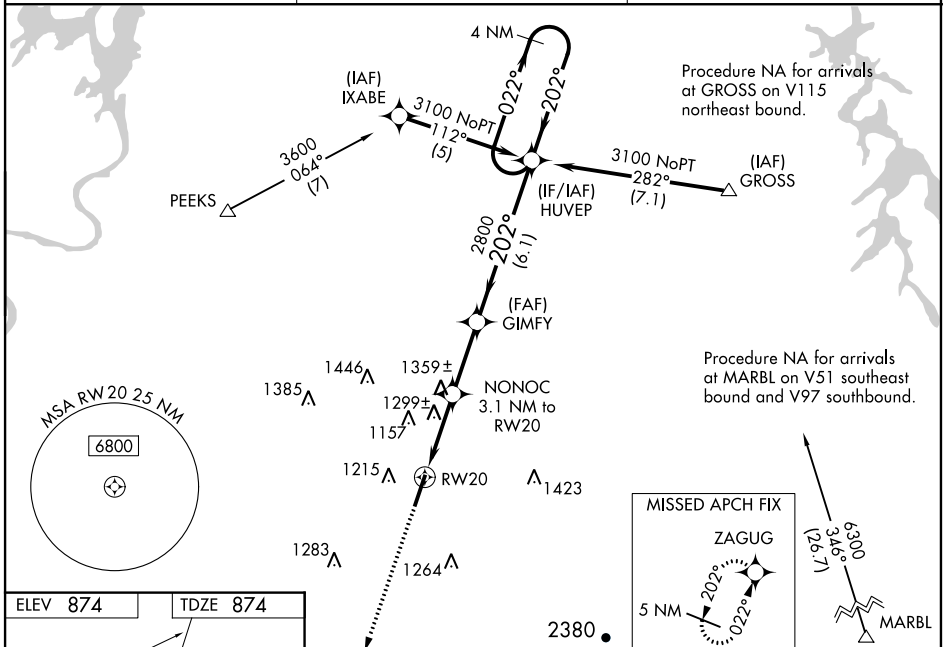
RNAV (GPS) RWY 20

MCMINN COUNTY (MMI)

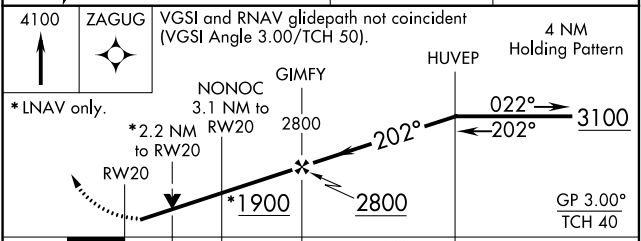
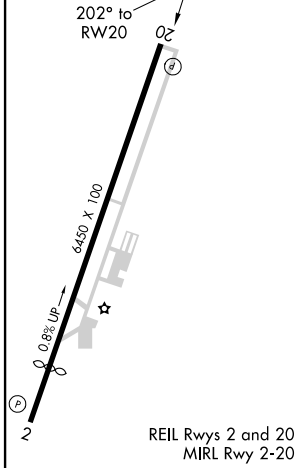
▼ Baro-VNAV NA when using Mc Ghee Tyson altimeter setting. For uncompensated Baro-VNAV systems, LNAV/VNAV NA below -16°C (4°F) or above 54° (130°F). DME/DME RNP-0.3 NA. Helicopter visibility reduction below ½ SM NA. When local altimeter setting not received, use Mc Ghee Tyson altimeter setting; increase LPV DA to 1275 feet and all Cats visibility ½ SM; LNAV/VNAV DA to 1819 feet and all Cats visibility 1 SM; increase all MDAs 120 feet and LNAV Cat B and Circling Cats A/C visibility ½ SM, increase LNAV Cats C/D visibility ½ SM. VDP NA when using Mc Ghee Tyson altimeter setting. Night Landing: Rwy 2 NA.

MISSED APPROACH:
Climb to 4100 direct ZAGUG and hold.

AWOS-3 125.425	KNOXVILLE APP CON 123.9 353.6	UNICOM 122.8 (CTAF)
--------------------------	---	-------------------------------



ELEV 874	TDZE 874
----------	----------



CATEGORY	A	B	C	D
LPV DA		1174-1	300 (300-1)	
LNAV/VNAV DA		1718-3	844 (900-1)	
LNAV MDA	1620-1 746 (800-1)	1620-1¼ 746 (800-1¼)	1620-2¼ 746 (800-2¼)	1620-2½ 746 (800-2½)
CIRCLING	1620-1 746 (800-1)	1620-1¼ 746 (800-1¼)	1620-2¼ 746 (800-2¼)	1820-3 946 (1000-3)

SE-1, 07 OCT 2021 to 04 NOV 2021

SE-1, 07 OCT 2021 to 04 NOV 2021