

WAAS CH <b>58330</b> W05A	APP CRS <b>054°</b>	Rwy Idg TDZE Apt Elev	<b>6300</b> <b>1608</b> <b>1608</b>
---------------------------------	------------------------	-----------------------------	---

# RNAV (GPS) RWY 5

GREENEVILLE MUNI (GCY)

RNP APCH.

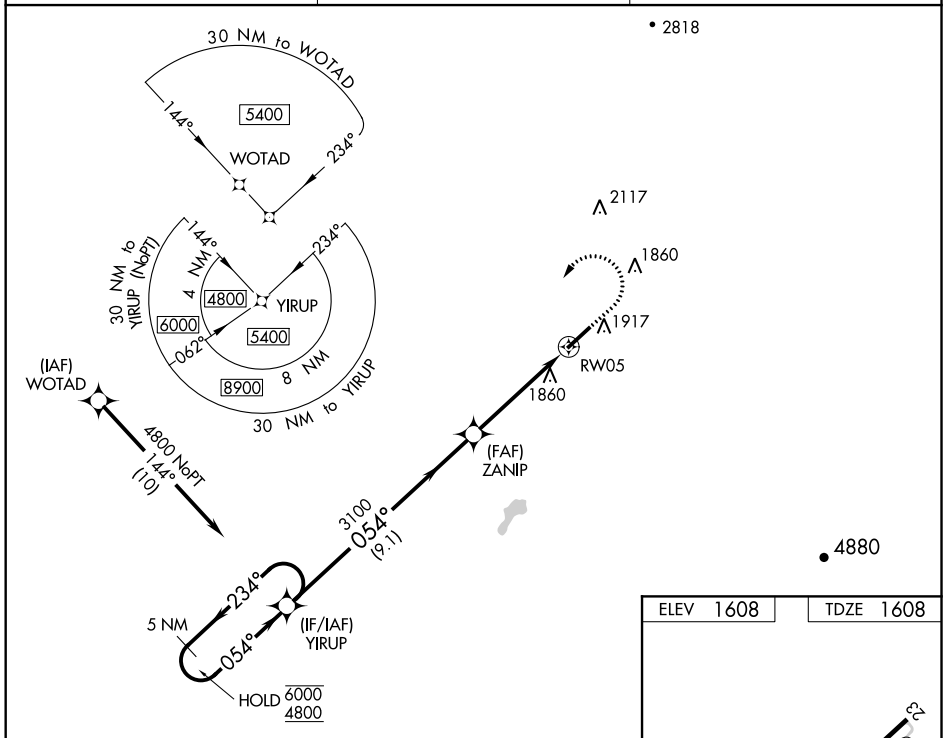
**⚠** Circling Rwy 23 NA at night. For uncompensated Baro-VNAV systems, LNAV/VNAV NA below -18°C or above 54°C.

MISSED APPROACH: Climb to 2500 then climbing left turn to 4800 direct YIRUP and hold.

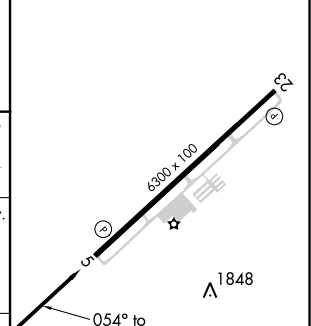
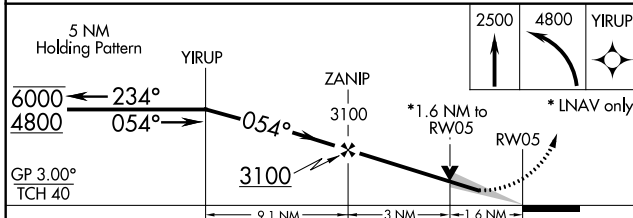
AWOS-3  
**128.425**

TRI-CITY APP CON★  
**128.05 317.5**

UNICOM  
**122.7 (CTAF)**



ELEV 1608	TDZE 1608
-----------	-----------



CATEGORY	A	B	C	D
LPV DA		1860-3/4	252 (300-3/4)	
LNAV/VNAV DA		2179-15/8	571 (600-15/8)	
LNAV MDA	2140-1	532 (600-1)	2140-1 1/2	532 (600-1 1/2)
<b>C</b> CIRCLING	2240-1	632 (700-1)	2260-1 3/4 652 (700-1 3/4)	2280-2 1/4 672 (700-2 1/4)

MIRL Rwy 5-23  
REIL Rws 5 and 23

SE-1, 07 OCT 2021 to 04 NOV 2021

SE-1, 07 OCT 2021 to 04 NOV 2021