

WAAS CH 66008	APP CRS 181°	Rwy Idg TDZE 239	5002
W18A		Apt Elev 239	

RNAV (GPS) RWY 18

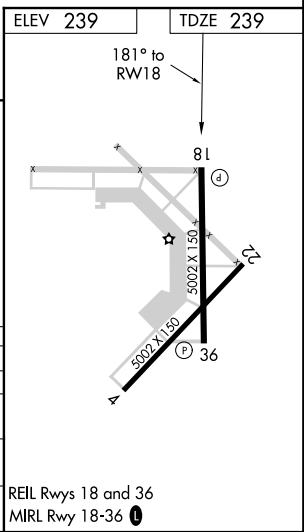
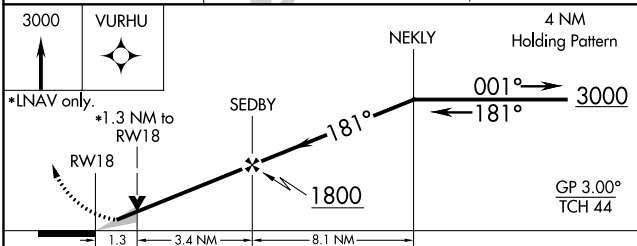
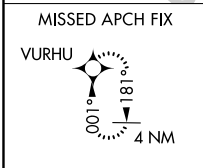
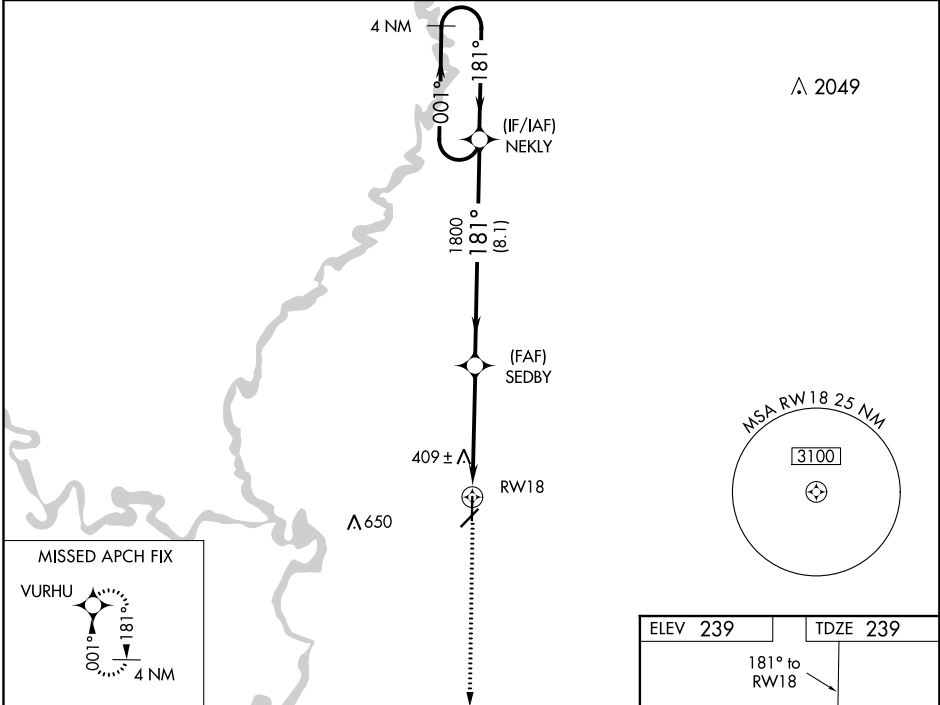
NEWPORT RGNL (M19)

RNP APCH-GPS.

▼ When local altimeter setting not received, use Batesville altimeter setting: increase LPV DA to 575 feet and all visibilities $\frac{1}{2}$ SM; increase LNAV/VNAV DA to 845 feet and all visibilities $\frac{1}{2}$ SM; increase all MDAs 100 feet and visibility Cats C $\frac{1}{4}$ SM and D $\frac{1}{2}$ SM. VDP NA when using Batesville altimeter setting. For uncompensated Baro-VNAV systems, LNAV/VNAV NA below -15°C or above 54°C. Baro-VNAV NA when using Batesville altimeter setting.

MISSED APPROACH: Climb to 3000 direct VURHU and hold.

AWOS-3PT 118.15	MEMPHIS CENTER 120.075 289.4	UNICOM 122.8 (CTAF) ①
---------------------------	--	---------------------------------



CATEGORY	A	B	C	D
LPV DA	489- $\frac{3}{4}$ 250 (300- $\frac{3}{4}$)			
LNAV/VNAV DA	759- $1\frac{3}{4}$ 520 (600- $1\frac{3}{4}$)			
LNAV MDA	700-1	461 (500-1)	700- $1\frac{1}{4}$ 461 (500- $1\frac{1}{4}$)	700- $1\frac{1}{2}$ 461 (500- $1\frac{1}{2}$)
CIRCLING	760-1	521 (600-1)	760- $1\frac{1}{2}$ 521 (600- $1\frac{1}{2}$)	900-2 661 (700-2)

REIL Rwy 18 and 36
MIRL Rwy 18-36 ①

SC-1, 07 OCT 2021 to 04 NOV 2021

SC-1, 07 OCT 2021 to 04 NOV 2021