

WAAS CH 87035 W22A	APP CRS 216°	Rwy Idg TDZE Apt Elev	6800 3522 3545
--	------------------------	-----------------------------	---

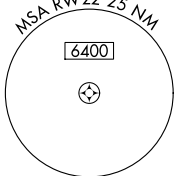
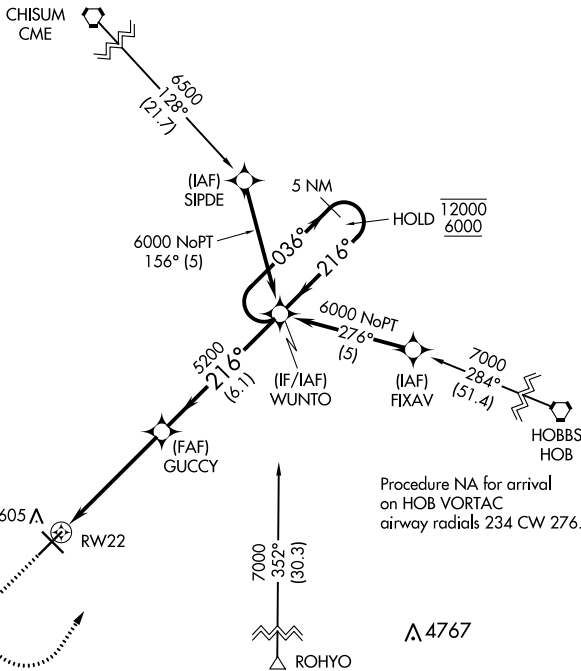
RNAV (GPS) RWY 22

ARTESIA MUNI (ATS)

RNP APCH.	MISSED APPROACH: Climb to 4600 then climbing left turn to 6000 direct WUNTO and hold.
<p>▼ For uncompensated Baro-VNAV systems, procedure NA below -22°C or above 54°C.</p> <p>▲</p>	

AWOS-3 126.725	ROSWELL APP CON * 119.6 239.0	UNICOM 123.075 (CTAF) 0
--------------------------	---	-----------------------------------

Procedure NA for arrival on CME VORTAC
airway radials 051 CW 204.

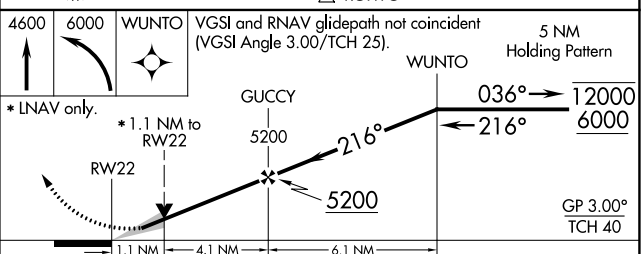
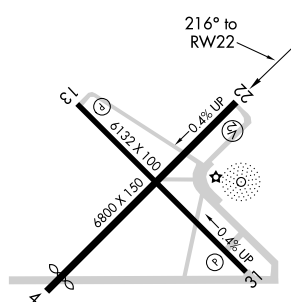


Procedure NA for arrival on HOB VORTAC
airway radials 234 CW 276.

SW-1, 07 OCT 2021 to 04 NOV 2021

SW-1, 07 OCT 2021 to 04 NOV 2021

ELEV 3545	TDZE 3522
-----------	-----------



CATEGORY	A	B	C	D
LPV DA		3772-1	250 (300-1)	
LNAV/VNAV DA		3772-1	250 (300-1)	
LNAV MDA		3880-1	358 (400-1)	
C CIRCLING	3960-1 415 (500-1)	4000-1 455 (500-1)	4040-1½ 495 (500-1½)	4240-2¼ 695 (700-2¼)