

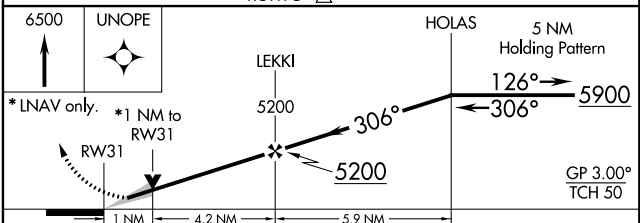
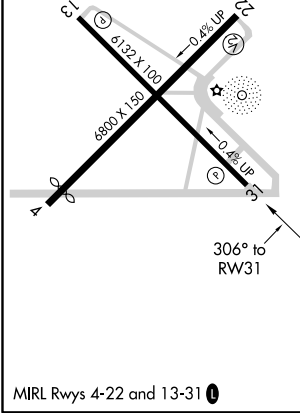
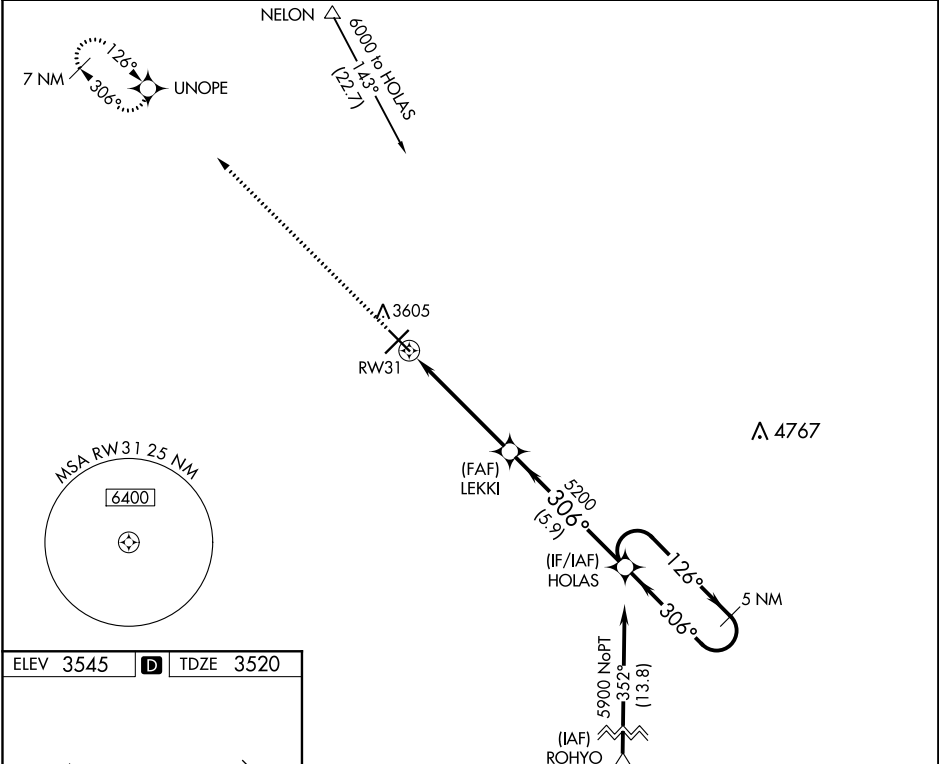
WAAS CH <b>82535</b> <b>W31A</b>	APP CRS <b>306°</b>	Rwy Idg TDZE Apt Elev	<b>6132</b> <b>3520</b> <b>3545</b>
--	------------------------	-----------------------------	---

# RNAV (GPS) RWY 31

ARTESIA MUNI (ATS)

**⚠** For uncompensated Baro-VNAV systems, LNAV/VNAV NA below -22°C (-7°F) or above 52°C (125°F). DME/DME RNP-0.3 NA. MISSED APPROACH: Climb to 6500 direct UNOPE and hold.

AWOS-3 <b>126.725</b>	ROSWELL APP CON* <b>119.6 239.0</b>	UNICOM <b>123.075 (CTAF) ①</b>
--------------------------	--	-----------------------------------



CATEGORY	A	B	C	D
LPV DA		3720- <sup>3</sup> / <sub>4</sub>	200 (200- <sup>3</sup> / <sub>4</sub> )	
LNAV/VNAV DA		3809-1	289 (300-1)	
LNAV MDA		3880-1	360 (400-1)	
<b>C</b> CIRCLING	3980-1 435 (500-1)	4000-1 455 (500-1)	4080-1½ 535 (600-1½)	4240-2¼ 695 (700-2¼)

SW-1, 07 OCT 2021 to 04 NOV 2021

SW-1, 07 OCT 2021 to 04 NOV 2021