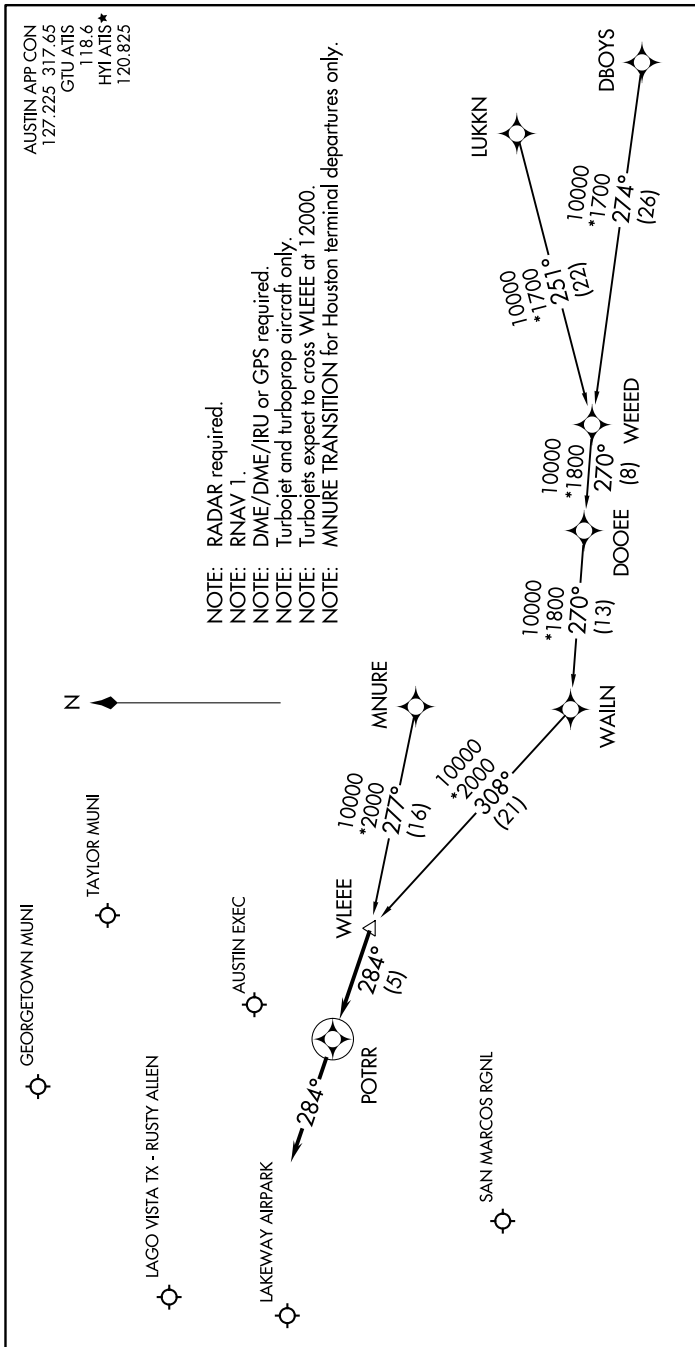


POTRR ONE ARRIVAL (RNAV)

AUSTIN, TEXAS

SC-3, 07 OCT 2021 to 04 NOV 2021



NOTE: RADAR required.
 NOTE: RNAV 1.
 NOTE: DME/DME/IRU or GPS required.
 NOTE: Turbojet and turboprop aircraft only.
 NOTE: Turbojets expect to cross WLEEE at 12000.
 NOTE: MNURE TRANSITION for Houston terminal departures only.

AUSTIN APP CON
 127.225 317.65
 GTU ATIS
 118.6
 HMI ATIS*
 120.825

ARRIVAL ROUTE DESCRIPTION

DBOYS TRANSITION (DBOYS.POTRR1)
LUKKN TRANSITION (LUKKN.POTRR1)
MNIURE TRANSITION (MNIURE.POTRR1)
WEEED TRANSITION (WEEED.POTRR1)

LANDING ALL AIRPORTS: From WLEEE on track 284° to POTRR, then on track 284°. Expect RADAR vectors to final approach course.

SC-3, 07 OCT 2021 to 04 NOV 2021

POTRR ONE ARRIVAL (RNAV)

AUSTIN, TEXAS