

WAAS CH <b>42712</b> <b>W36A</b>	APP CRS <b>001°</b>	Rwy Idg <b>5495</b> TDZE <b>418</b> Apt Elev <b>436</b>
--	------------------------	---

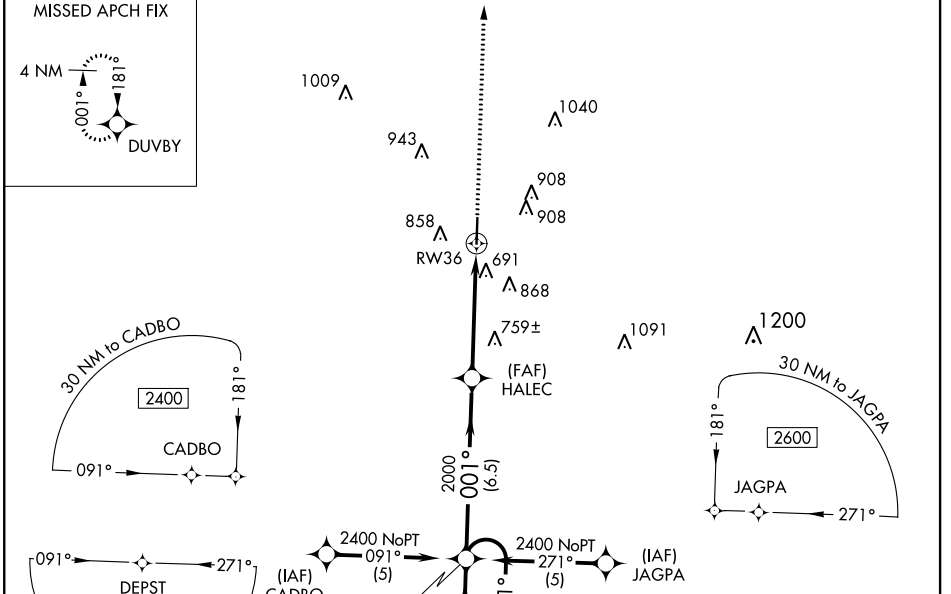
# RNAV (GPS) RWY 36

MARION COUNTY-RANKIN FITE (HAB)

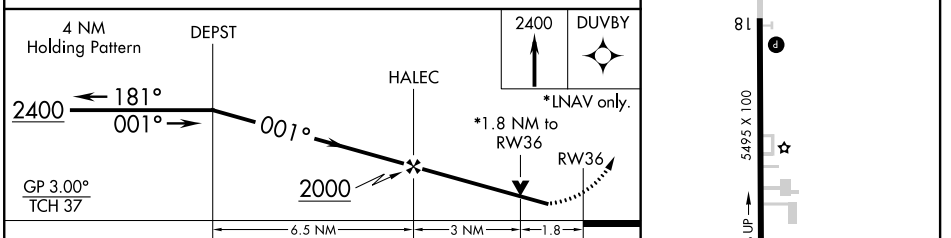
**⚠** For uncompensated Baro-VNAV systems, LNAV/VNAV NA below -15°C (5°F) or above 48°C (118°F). DME/DME RNP-0.3 NA. Helicopter visibility reduction below 3/4 SM NA. Obtain local altimeter setting on CTAF; when not received, use Tupelo altimeter setting and increase DA 104 feet and all MDA 120 feet, increase visibility LPV all Cats and LNAV Cats C, D 1/4 mile, Circling Cats A, D 1/4 mile, and Cat C 1/2 mile. VDP NA when using Tupelo altimeter setting. Baro-VNAV NA when using Tupelo altimeter setting. Circling to Rwy 18 NA at night.

**⚠** MISSED APPROACH: Climb to 2400 direct DUVBY and hold.

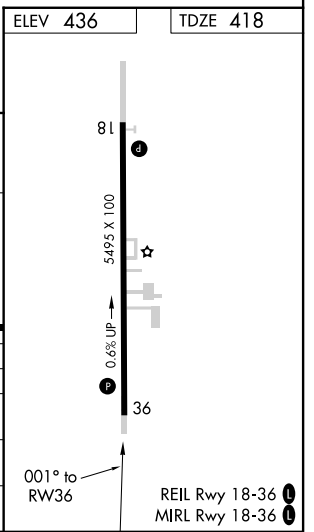
MEMPHIS CENTER <b>127.1 269.4</b>	UNICOM <b>122.8 (CTAF) 0</b>
--------------------------------------	---------------------------------



ELEV 436	TDZE 418
----------	----------



CATEGORY	A	B	C	D
LPV DA	723-1 3/4 305 (300-1 3/4)			
LNAV/VNAV DA	1219-3 801 (800-3)			
LNAV MDA	1020-1	602 (600-1)	1020-1 3/4 602 (600-1 3/4)	1020-2 602 (600-2)
CIRCLING	1220-1 784 (800-1)	1220-1 1/4 784 (800-1 1/4)	1220-2 1/4 784 (800-2 1/4)	1260-2 3/4 824 (900-2 3/4)



SE-4, 07 OCT 2021 to 04 NOV 2021

SE-4, 07 OCT 2021 to 04 NOV 2021