

LOC/DME I-FFC 111.95 Chan 56 (Y)	APP CRS 313°	Rwy Idg TDZE Apt Elev	5568 808 808
---	------------------------	-----------------------------	---

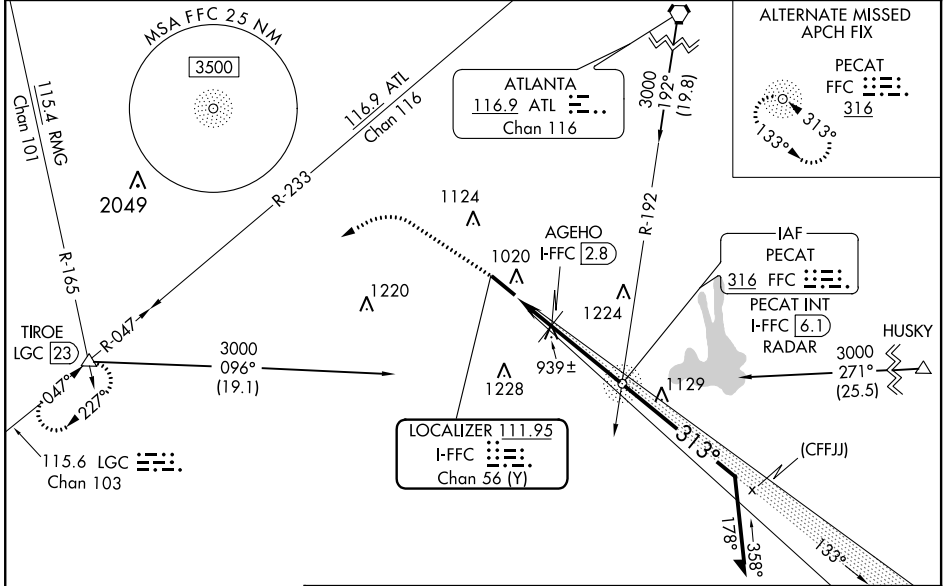
ILS or LOC RWY 31

ATLANTA RGNL FALCON FLD (F'F'C)

⚠ Inoperative table does not apply. Rwy 31 helicopter visibility reduction below 3/4 SM NA. When local altimeter setting not received, use Newnan Coweta County altimeter setting and increase all DA 47 feet and all MDA 60 feet; increase S-ILS 31 all Cats visibility 1/8 mile; increase S-LOC 31 Cats C/D and Circling Cat C visibility 1/8 mile; increase Circling Cat D visibility 1/4 mile; increase AGEHO Fix Minimums S-LOC 31 Cats C/D and Circling Cat D visibility 1/4 mile. Circling Rwy 13 NA at night.

ODALS
 ...
MISSED APPROACH: Climb to 1700 then climbing left turn to 4000 on heading 275° and LGC VORTAC R-047 to TIROE INT/LGC 23 DME and hold.

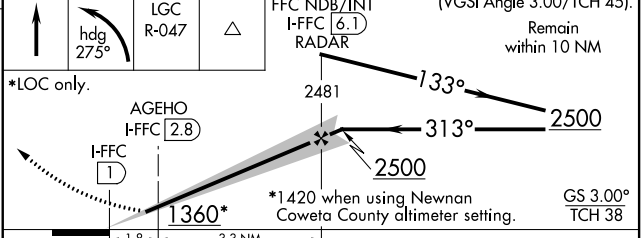
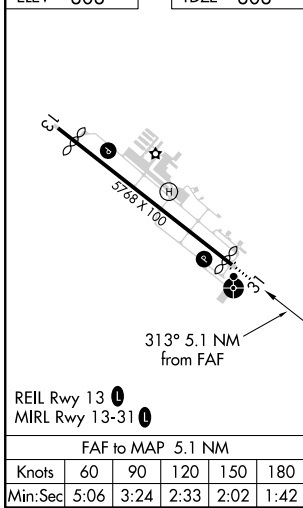
ASOS 118.525	ATLANTA APP CON 119.8 354.125	CLNC DEL 119.8	UNICOM 123.05 (CTAF)
------------------------	---	--------------------------	--------------------------------



SE-4, 07 OCT 2021 to 04 NOV 2021

SE-4, 07 OCT 2021 to 04 NOV 2021

ELEV 808 TDZE 808 1700 4000 LGC R-047 TIROE VGSi and ILS glidepath not coincident (VGSi Angle 3.00/TCH 45). Remain within 10 NM



CATEGORY	A	B	C	D
S-ILS 31	1082-1 274 (300-1)			
S-LOC 31	1360-1	552 (600-1)	1360-1½	552 (600-1½)
C CIRCLING	1360-1	552 (600-1)	1440-1¾ 632 (700-1¾)	1540-2¼ 732 (800-2¼)
AGEHO FIX MINIMUMS (DME REQUIRED)				
S-LOC 31	1200-1	392 (400-1)	1200-1½	392 (400-1½)
C CIRCLING	1320-1	512 (600-1)	1440-1¾ 632 (700-1¾)	1540-2¼ 732 (800-2¼)