

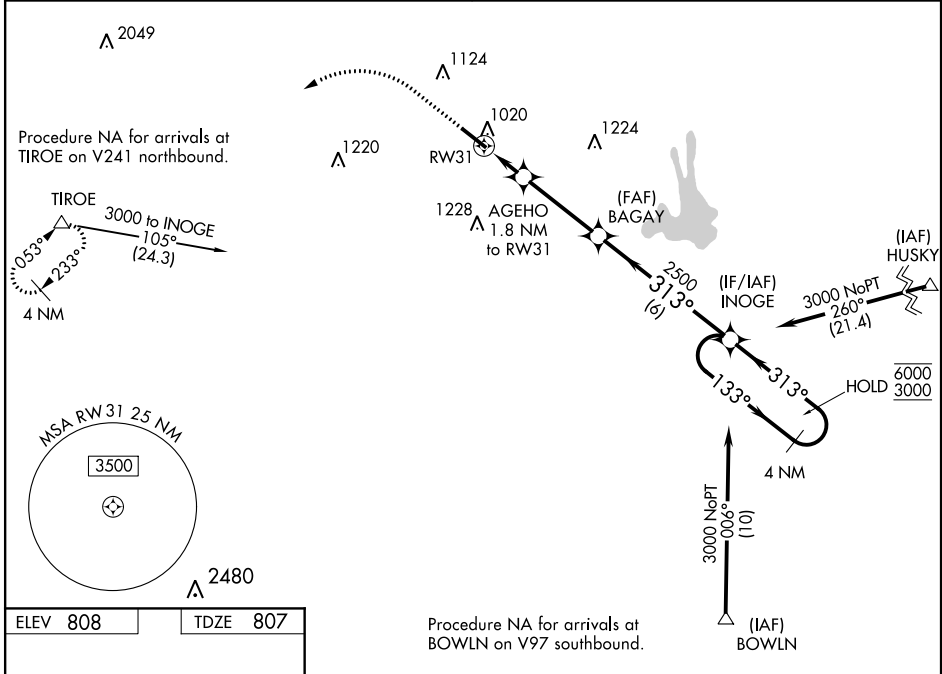
WAAS CH 72706 W31A	APP CRS 313°	Rwy Idg TDZE Apt Elev	5568 807 808
--	------------------------	-----------------------------	---

RNAV (GPS) RWY 31

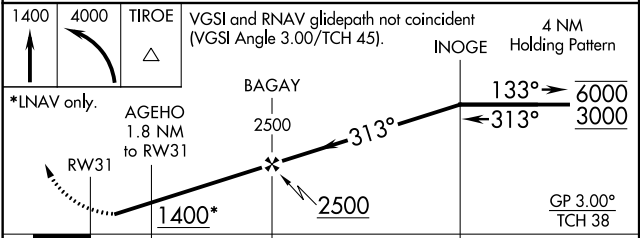
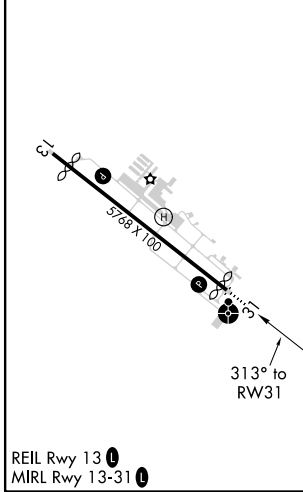
ATLANTA RGNL FALCON FLD (F'F'C)

RNP APCH.	ODALS	MISSED APPROACH: Climb to 1400 then climbing left turn to 4000 direct TIROE and hold.
<p>▼ Rwy 31 helicopter visibility reduction below 3/4 SM NA. Inop table does not apply to LPV. For inop ALS, increase LNAV/VNAV Cat A/B visibility to 1 1/2 SM. For uncompensated Baro-VNAV systems, LNAV/VNAV NA below -8°C or above 54°C. Circling Rwy 13 NA at night.</p>		

ASOS 118.525	ATLANTA APP CON 119.8 354.125	CLNC DEL 119.8	UNICOM 123.05 (CTAF) 0
------------------------	---	--------------------------	----------------------------------



ELEV 808	TDZE 807
----------	----------



CATEGORY	A	B	C	D
LPV DA		1059-3/4	252 (300-3/4)	
LNAV/VNAV DA		1189-1	382 (400-1)	
LNAV MDA	1280-3/4	473 (500-3/4)	1280-1 1/4	473 (500-1 1/4)
CIRCLING	1320-1	512 (600-1)	1440-1 3/4 632 (700-1 3/4)	1540-2 1/4 732 (800-2 1/4)

SE-4, 07 OCT 2021 to 04 NOV 2021

SE-4, 07 OCT 2021 to 04 NOV 2021