

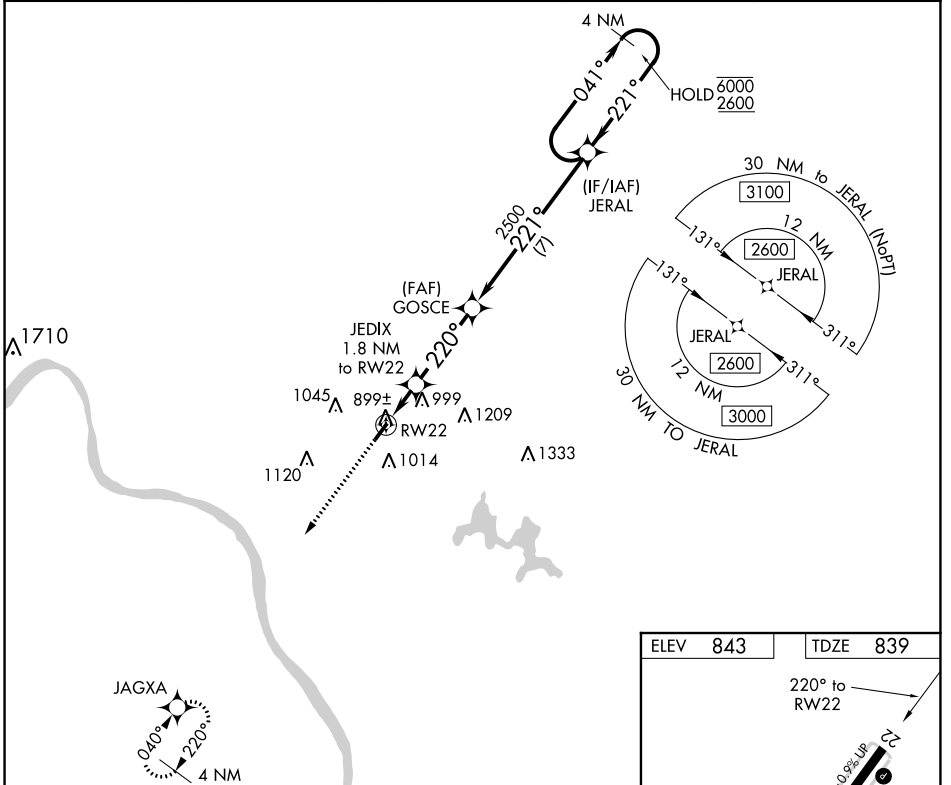
WAAS CH <b>82227</b> <b>W22A</b>	APP CRS <b>220°</b>	Rwy Idg TDZE Apt Elev	<b>3566</b> <b>839</b> <b>843</b>
--	------------------------	-----------------------------	---

# RNAV (GPS) RWY 22

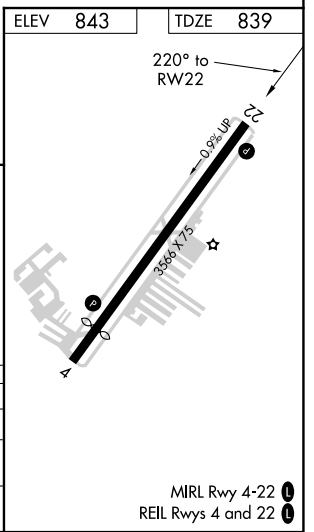
CLERMONT COUNTY (I69)

RNP APCH.		MISSED APPROACH: Climb to 2500 direct JAGXA and hold.	
<p>▼ Circling Rwy 4 NA at night. ▲ Rwy 22 helicopter visibility reduction below 1 SM NA.</p>			

AWOS-3 <b>127.275</b>	CINCINNATI APP CON <b>121.0 254.25</b>	CLNC DEL <b>124.9</b>	UNICOM <b>122.975 (CTAF) 0</b>
--------------------------	---	--------------------------	-----------------------------------



2500 ↑ JAGXA Visual Segment- Obstacles. JEDIX 1.8 NM to RW22 RW22 1420 GOSCE 2500 JERAL 4 NM Holding Pattern 041° → 6000 ← 221° 2600	A		B		C		D	
	1.8		3.4 NM		7 NM			
CATEGORY	A		B		C		D	
LP MDA	1160-1		321 (400-1)		NA		NA	
LNAV MDA	1240-1		401 (400-1)		1240-1½ 401 (400-1½)		NA	
CIRCLING	1320-1 477 (500-1)		1360-1 517 (600-1)		1520-2 677 (700-2)		NA	



EC-2, 07 OCT 2021 to 04 NOV 2021

EC-2, 07 OCT 2021 to 04 NOV 2021