

WAAS CH <b>58327</b> <b>W04A</b>	APP CRS <b>040°</b>	Rwy Idg TDZE Apt Elev	<b>3170</b> <b>840</b> <b>843</b>
----------------------------------------	------------------------	-----------------------------	-----------------------------------------

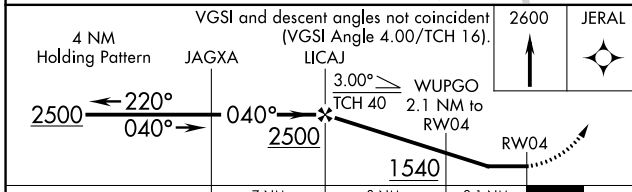
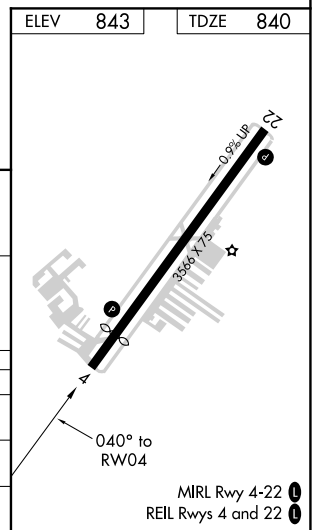
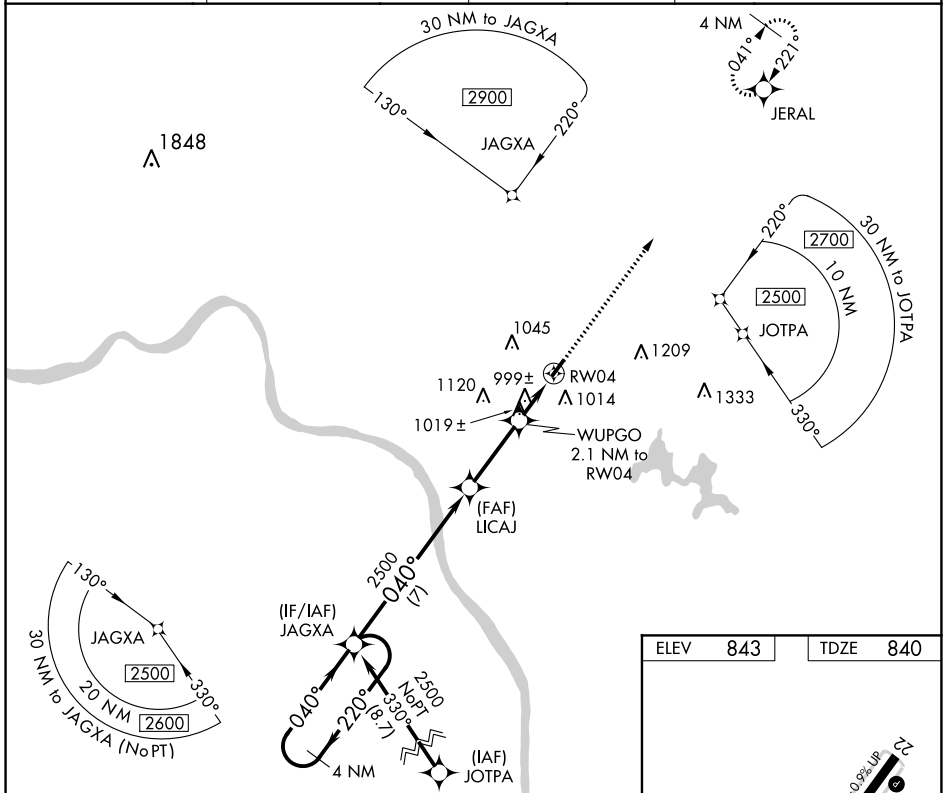
# RNAV (GPS) RWY 4

CLERMONT COUNTY (I69)

**⚠** Circling NA at night. Rwy 4/22 helicopter visibility reduction below 1 SM NA.  
**⚠** DME/DME RNP-0.3 NA. When local altimeter setting not received, use Cincinnati Muni/  
 Lunken Fld altimeter setting and increase all MDA 80 feet and all Cat C visibilities 1/4 SM.

**MISSED APPROACH:**  
 Climb to 2600 direct  
 JERAL and hold.

AWOS-3 <b>127.275</b>	CINCINNATI APP CON <b>121.0 254.25</b>	CLNC DEL <b>124.9</b>	UNICOM <b>122.975 (CTAF) 0</b>
--------------------------	-------------------------------------------	--------------------------	-----------------------------------



CATEGORY	A	B	C	D
LP MDA	1300-1	460 (500-1)	1300-1 3/8 460 (500-1 3/8)	NA
LNAV MDA	1320-1	480 (500-1)	1320-1 3/8 480 (500-1 3/8)	NA
<b>C</b> CIRCLING	1360-1	517 (600-1)	1520-2 677 (700-2)	NA

EC-2, 07 OCT 2021 to 04 NOV 2021

EC-2, 07 OCT 2021 to 04 NOV 2021