

BATAVIA, OHIO

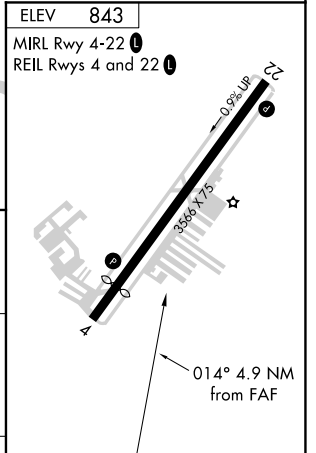
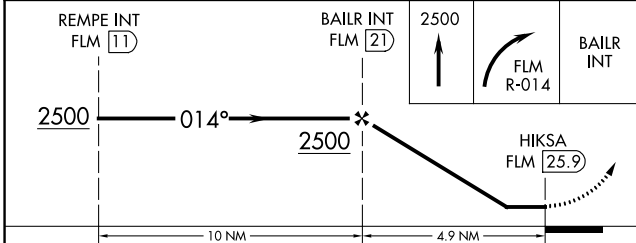
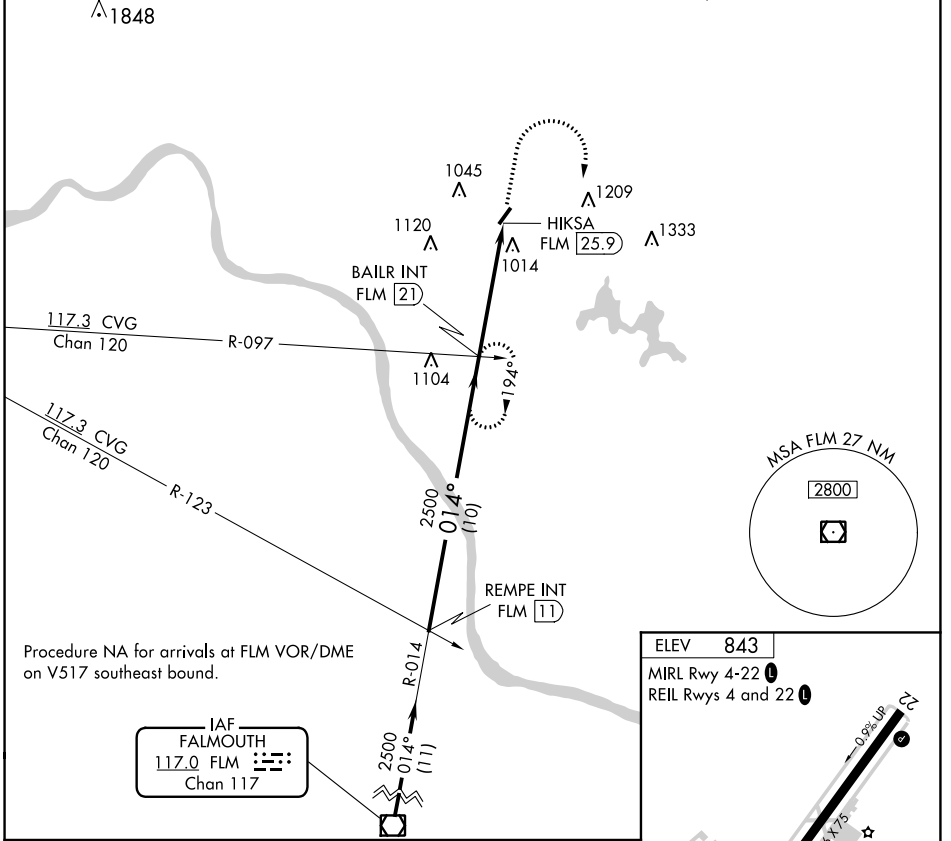
AL-5955 (FAA)

21112

VOR/DME FLM 117.0 Chan 117	APP CRS 014°	Rwy Idg TDZE Apt Elev	N/A N/A 843
--	------------------------	-----------------------------	--

VOR-B
CLERMONT COUNTY (I69)

Rwy 4/22 helicopter visibility reduction below 1 SM NA. Procedure NA at night. When local altimeter setting not received, use Cincinnati Muni/Lunken Fld altimeter setting and increase all MDAs 80 feet and visibility Cat C ¼ SM.		MISSED APPROACH: Climb to 2500 then right turn via FLM VOR/DME R-014 to BAILR INT/21 DME and hold.	
AWOS-3 127.275	CINCINNATI APP CON 121.0 254.25	CLNC DEL 124.9	UNICOM 122.975 (CTAF) 0



CATEGORY	A	B	C	D	FAF to MAP 4.9 NM					
CIRCLING	1420-1	1420-1¼	1520-2	NA	Knots	60	90	120	150	180
	577 (600-1)	577 (600-1¼)	677 (700-2)		Min:Sec	4:54	3:16	2:27	1:58	1:38

BATAVIA, OHIO
Amdt 7C 22JUN17

39°05'N-84°13'W

CLERMONT COUNTY (I69)
VOR-B

EC-2, 07 OCT 2021 to 04 NOV 2021

EC-2, 07 OCT 2021 to 04 NOV 2021