

WAAS CH <b>86237</b> <b>W21A</b>	APP CRS <b>213°</b>	Rwy Idg TDZE Apt Elev	<b>5000</b> <b>75</b> <b>75</b>
--	------------------------	-----------------------------	---------------------------------------

# RNAV (GPS) RWY 21

MARTIN COUNTY (MCZ)

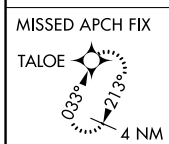
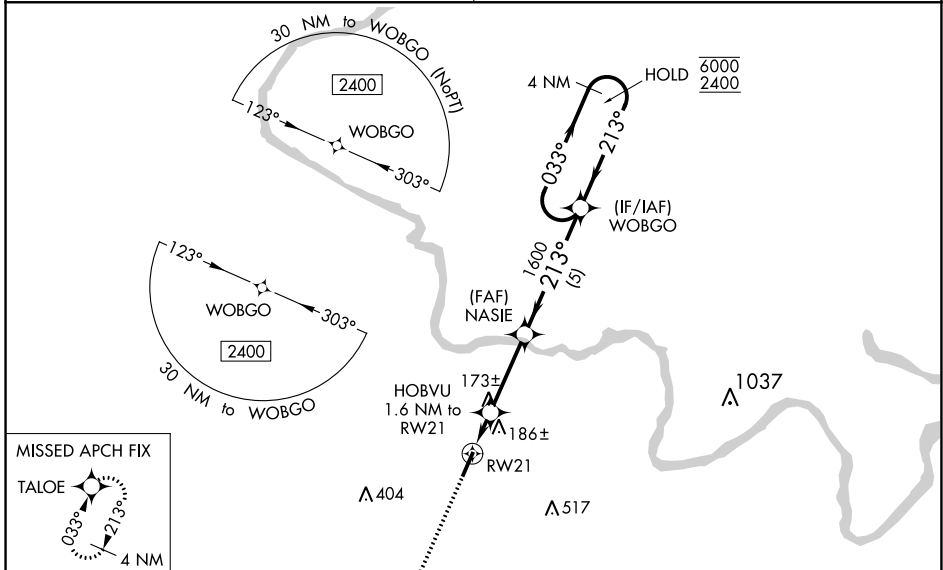
RNP APCH.

**NA** Baro-VNAV and VDP NA when using Rocky Mount altimeter setting. For uncompensated Baro-VNAV systems, LNAV/VNAV NA below -15°C or above 54°C.

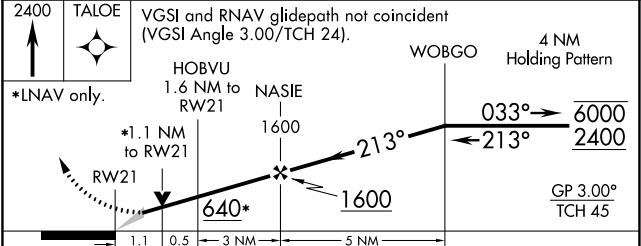
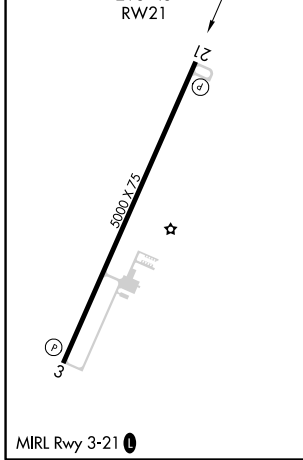
MISSED APPROACH: Climb to 2400 direct TALOE and hold, continue climb-in-hold to 2400.

WASHINGTON CENTER  
**123.85 279.65**

UNICOM  
**122.8 (CTAF) 0**



ELEV 75	TDZE 75
---------	---------



CATEGORY	A	B	C	D
LPV DA		380-1	305 (400-1)	
LNAV/VNAV DA		337-1	262 (300-1)	
LNAV MDA		440-1	365 (400-1)	
<b>C</b> CIRCLING	500-1 425 (500-1)	540-1 465 (500-1)	680-1¾ 605 (700-1¾)	880-2½ 805 (900-2½)

SE-2, 07 OCT 2021 to 04 NOV 2021

SE-2, 07 OCT 2021 to 04 NOV 2021