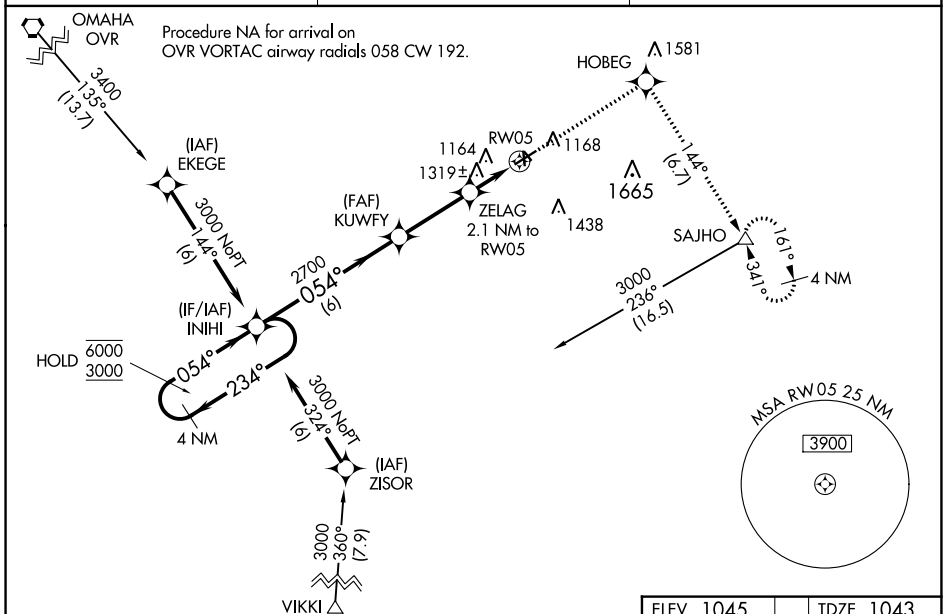


WAAS CH 42927 W05A	APP CRS 054°	Rwy ldg TDZE 1043 Apt Elev 1045
--	------------------------	---

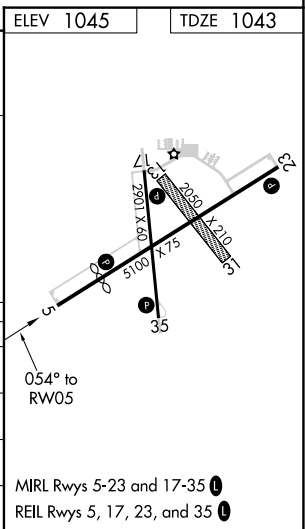
RNAV (GPS) RWY 5

RED OAK MUNI (RDK)

RNP APCH <p>⚠ Circling NA to Rwys 13 and 31. For uncompensated Baro-VNAV systems, LNAV/VNAV NA below -17° C or above 54° C.</p>		MISSED APPROACH: Climb to 3000 direct HOBEG and right turn on track 144° to SAJHO and hold.
AWOS-3P 123.925	OMAHA APP CON 124.5 263.0	UNICOM 122.8 (CTAF) 0



VGSi and RNAV glidepath not coincident (VGSi Angle 3.00/TCH 26). 4 NM Holding Pattern 6000 ← 234° 3000 — 054° →		3000 HOBEG 	SAJHO tr 144°
GP 3.00° TCH 40		*LNAV only 2700 *1740	
CATEGORY	A	B	C
LPV DA	1363-1	320 (400-1)	NA
LNAV/VNAV DA	1660-2¼	617 (700-2¼)	NA
LNAV MDA	1600-1	557 (600-1)	NA
CIRCLING	1620-1 575 (600-1)	1740-1 695 (700-1)	NA



NC-3, 07 OCT 2021 to 04 NOV 2021

NC-3, 07 OCT 2021 to 04 NOV 2021