

RED OAK, IOWA


AL-6051 (FAA)

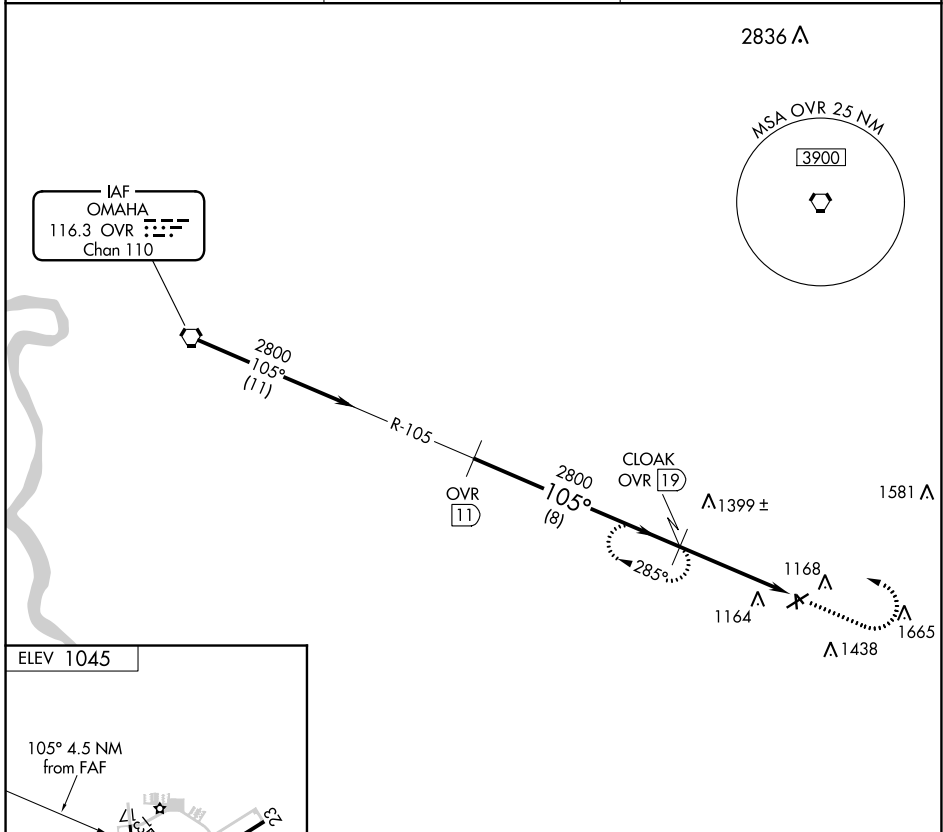
21084

VORTAC OVR 116.3 Chan 110	APP CRS 105°	Rwy Idg TDZE Apt Elev	N/A N/A 1045
---	------------------------	-----------------------------	---

VOR/DME-A RED OAK MUNI (RDK)

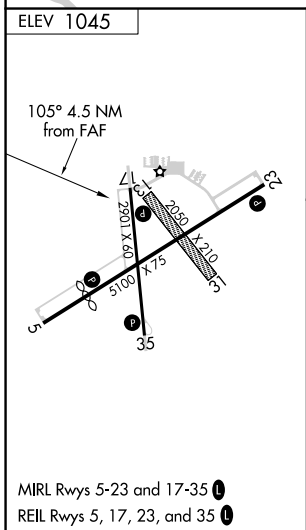
 Circling NA to Rwys 13 and 31.
 MISSED APPROACH: Climb to 2800 then left turn via OVR R-105 to CLOAK/19 DME and hold.

AWOS-3P 123.925	OMAHA APP CON 124.5 263.0	UNICOM 122.8 (CTAF) 
---------------------------	-------------------------------------	---



NC-3, 07 OCT 2021 to 04 NOV 2021

NC-3, 07 OCT 2021 to 04 NOV 2021



RED OAK, IOWA
 Amdt 5A 25MAR21

Procedure Turn NA	OVR 11	CLOAK OVR 19	2800 ↑ OVR R-105	CLOAK OVR 19
	2800	2800		OVR 23.5
	8 NM		4.5 NM	
CATEGORY	A	B	C	D
CIRCLING	1660-1 615 (700-1)	1740-1¼ 695 (700-1¼)	NA	

41°01'N-95°16'W

RED OAK MUNI (RDK) VOR/DME-A