

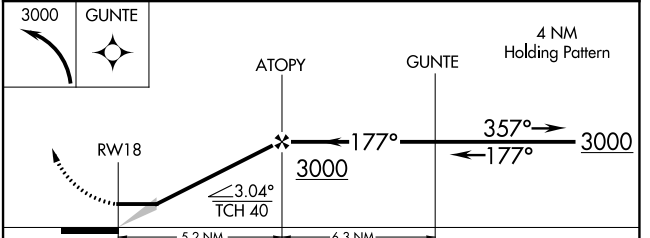
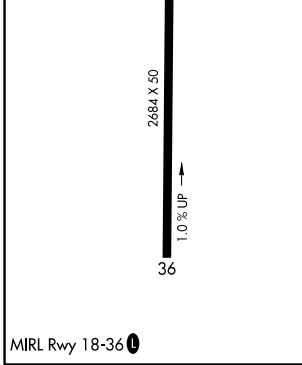
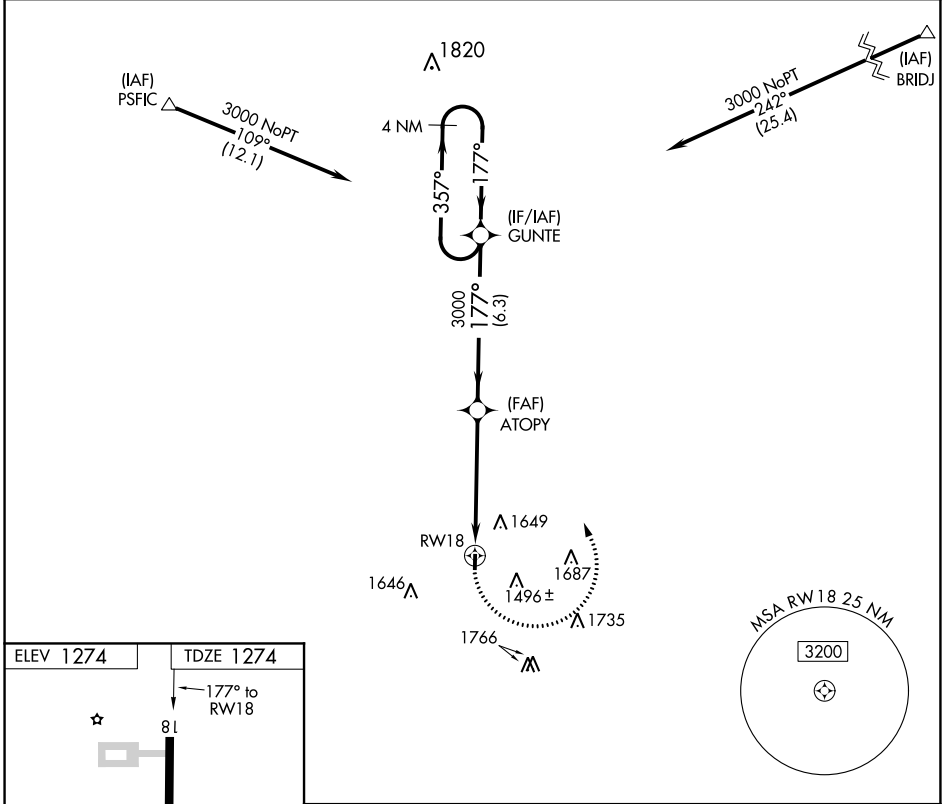
APP CRS 177°	Rwy Idg 2684
	TDZE 1274
	Apt Elev 1274

RNAV (GPS) RWY 18

CORNING MUNI (CRZ)

RNP APCH.	MISSED APPROACH: Climbing left turn to 3000 direct GUNTE and hold.
▼ Use Creston altimeter setting; when not received, use ▲ NA Clarinda altimeter setting and increase all MDAs 60 feet.	

CSQ AWOS-3 124.75	MINNEAPOLIS CENTER 119.6 290.4	CTAF 122.9	122.8 0
-----------------------------	--	----------------------	----------------



CATEGORY	A	B	C	D
LNAV MDA	1820-1	546 (600-1)	NA	
CIRCLING	1840-1 566 (600-1)	2000-1 726 (800-1)	NA	

NC-3, 07 OCT 2021 to 04 NOV 2021

NC-3, 07 OCT 2021 to 04 NOV 2021