

VORTAC STL <b>117.4</b> Chan <b>121</b>	APP CRS <b>208°</b>	Rwy ldg <b>3800</b> TDZE <b>436</b> Apt Elev <b>436</b>
-----------------------------------------------	------------------------	---------------------------------------------------------------

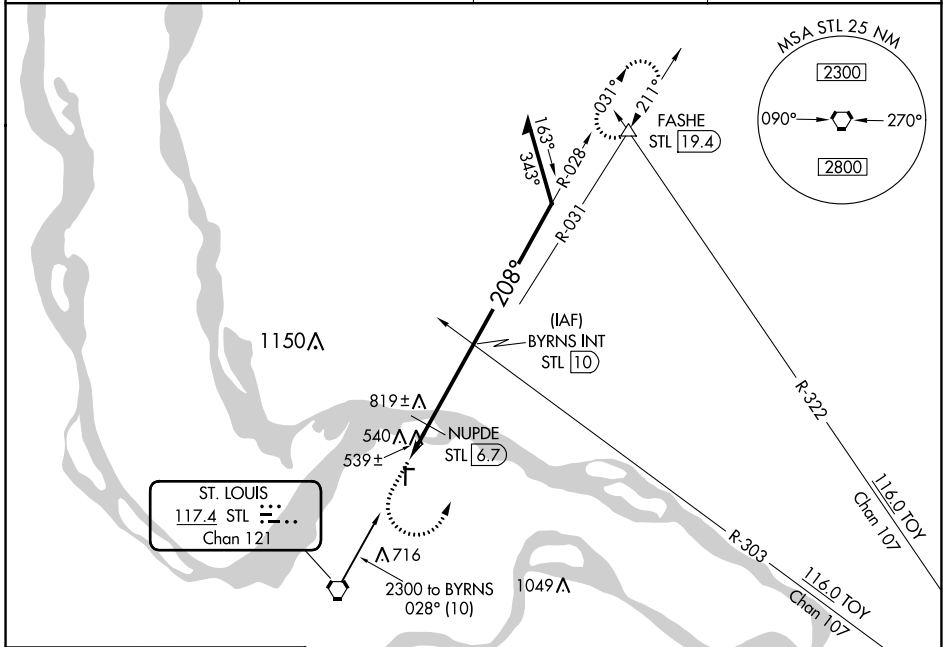
# VOR RWY 18

ST CHARLES COUNTY SMARTT (S/E/T)

**⚠** If local altimeter setting not received, use St Louis Lambert Intl altimeter setting and increase all MDAs 60 feet. Straight-in minimums NA with St Louis Lambert Intl altimeter setting.

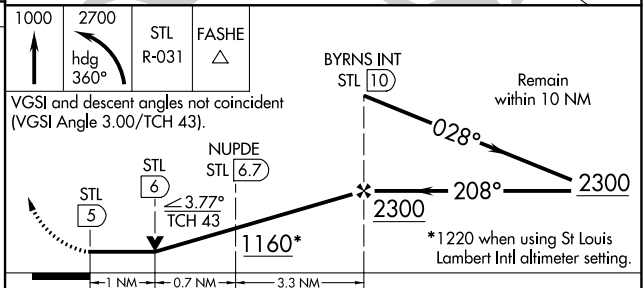
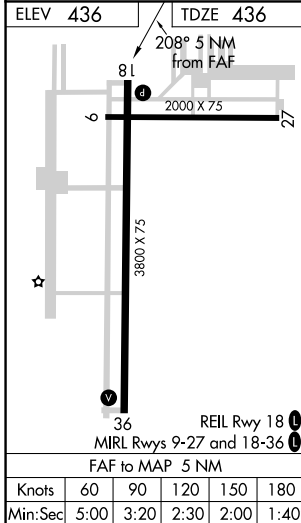
**⚠** MISSED APPROACH: Climb to 1000 then climbing left turn to 2700 via heading 360° and STL R-031 to FASHE INT/19.4 DME and hold.

ASOS <b>118.075</b>	ST. LOUIS APP CON <b>124.2 353.9</b>	CLNC DEL <b>121.6</b>	UNICOM <b>122.7 (CTAF)</b> <b>📻</b>
------------------------	-----------------------------------------	--------------------------	----------------------------------------



NC-3, 07 OCT 2021 to 04 NOV 2021

NC-3, 07 OCT 2021 to 04 NOV 2021



CATEGORY	A	B	C	D
S-18	1160-1	724 (800-1)	1160-2 724 (800-2)	NA
CIRCLING	1160-1	724 (800-1)	1160-2 724 (800-2)	NA
NUPDE FIX MINIMUMS				
S-18	800-1 364 (400-1)			NA
CIRCLING	840-1 404 (500-1)	900-1 464 (500-1)	900-1½ 464 (500-1½)	NA