

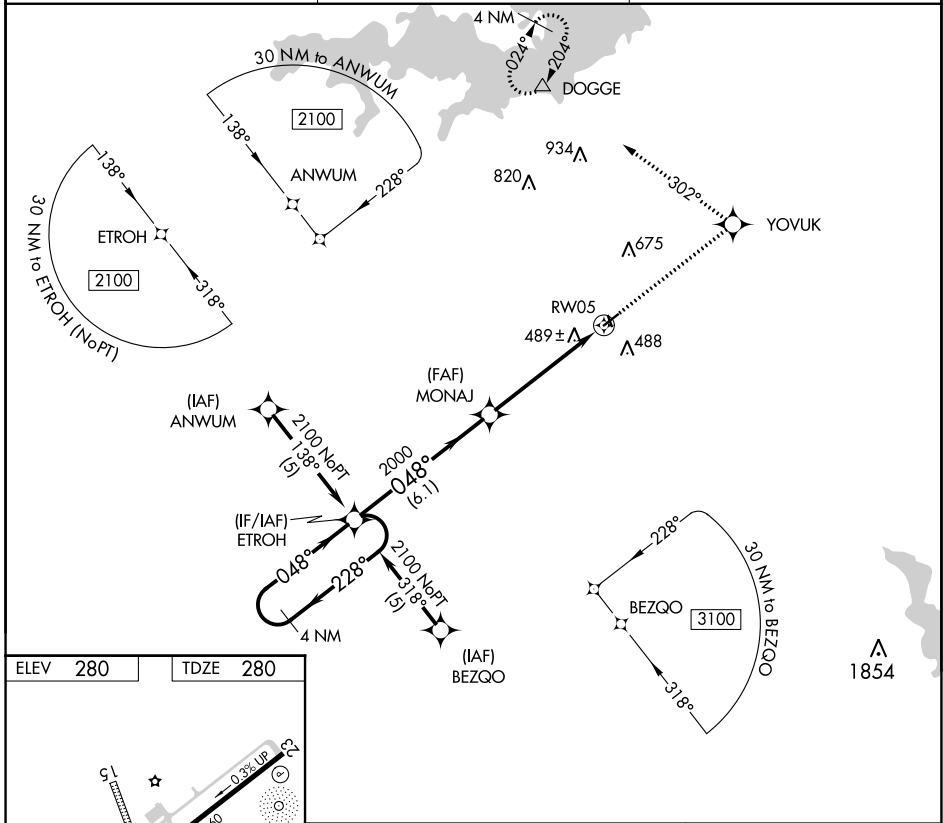
APP CRS	Rwy Idg	<b>3800</b>
<b>048°</b>	TDZE	<b>280</b>
	Apt Elev	<b>280</b>

# RNAV (GPS) RWY 5

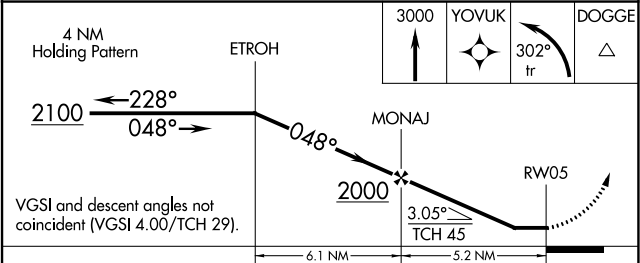
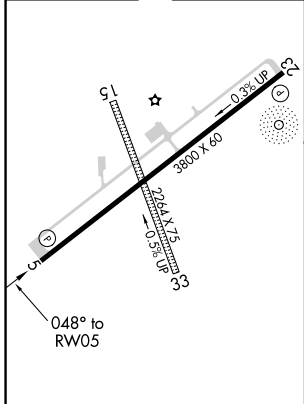
HALL-MILLER MUNI (ATA)

RNP APCH.		MISSED APPROACH: Climb to 3000 direct YOYUK and left turn via 302° track to DOGGE and hold.
<p>▼ Rwy 5 helicopter visibility reduction below 3/4 SM NA. Use Texarkana altimeter setting, when not received use Mount Pleasant altimeter setting and increase all MDA 40 feet.</p> <p>▲ NA</p>		

TXK ASOS	FORT WORTH CENTER	CTAF
<b>120.2</b>	<b>123.925 269.475</b>	<b>122.9 0</b>



ELEV	280	TDZE	280
------	-----	------	-----



CATEGORY	A	B	C	D
LNAV MDA	860-1	580 (600-1)	NA	

ATLANTA, TEXAS  
Amdt 1C 02JAN20

33°06'N-94°12'W

HALL-MILLER MUNI (ATA)  
RNAV (GPS) RWY 5

SC-2, 07 OCT 2021 to 04 NOV 2021

SC-2, 07 OCT 2021 to 04 NOV 2021