

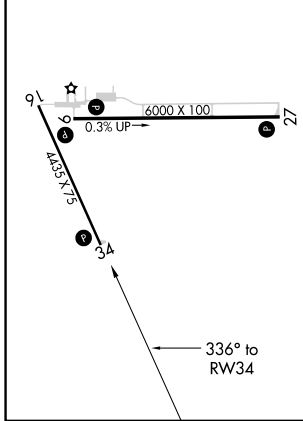
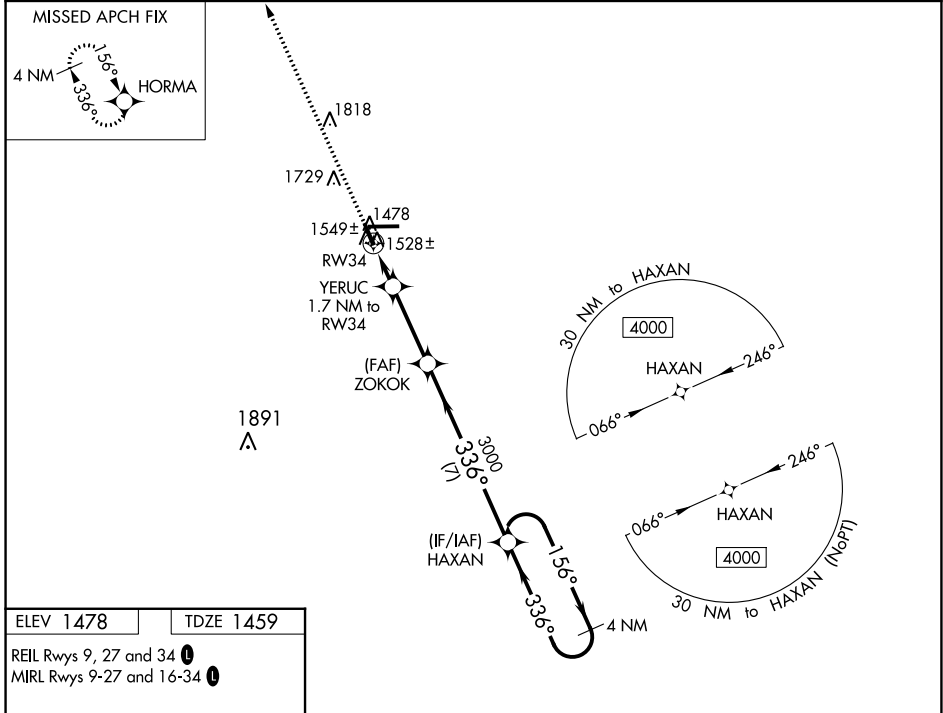
WAAS CH <b>73029</b> <b>W34A</b>	APP CRS <b>336°</b>	Rwy Idg TDZE Apt Elev	<b>4435</b> <b>1459</b> <b>1478</b>
--	------------------------	-----------------------------	---

# RNAV (GPS) RWY 34

TAYLOR COUNTY (MDZ)

RNP APCH.	MISSED APPROACH: Climb to 4000 direct HORMA and hold.
<p>▼ When local altimeter setting not received, use Merrill altimeter setting and increase all MDA 100 feet. Increase LP Cat C/D visibility ¼ mile, LNAV Cat C/D visibility ¼ mile, and Circling Cat D visibility ⅓ mile. VDP NA when using Merrill altimeter setting.</p>	

AWOS-3 <b>119.025</b>	MINNEAPOLIS CENTER <b>124.4 317.7</b>	UNICOM <b>122.8 (CTAF) 0</b>
--------------------------	--	---------------------------------



4000	HORMA	VGSi and descent angles not coincident (VGSi Angle 3.00/TCH 27).		4 NM Holding Pattern
		YERUC 1.7 NM to RW34	ZOKOK	HAXAN
		0.9 NM to RW34	≤ 3.00° TCH 45	336°
		2020	3000	4000
		-0.9 - 0.8	3 NM	7 NM
CATEGORY	A	B	C	D
LP MDA	1780-1 321 (400-1)			
LNAV MDA	1800-1 341 (400-1)			
CIRCLING	1940-1	462 (500-1)	1940-1½ 462 (500-1½)	2080-2 602 (700-2)

EC-3, 07 OCT 2021 to 04 NOV 2021

EC-3, 07 OCT 2021 to 04 NOV 2021