

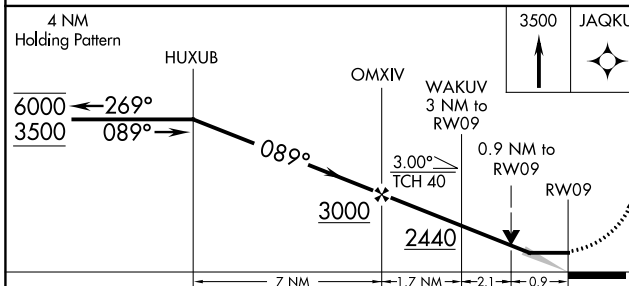
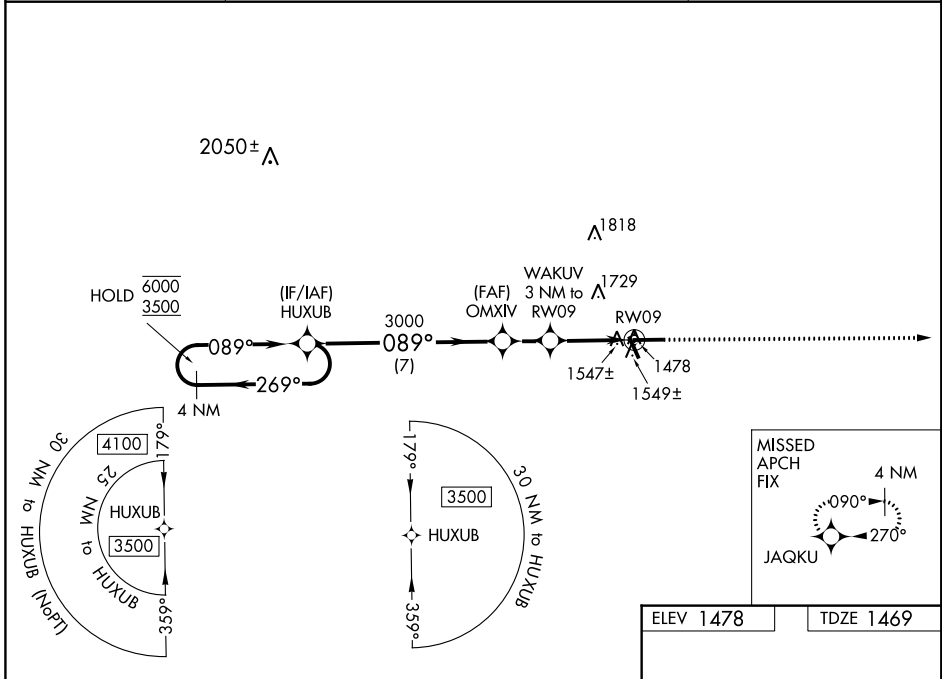
WAAS CH 99331 W09A	APP CRS 089°	Rwy Idg TDZE Apt Elev	6000 1469 1478
--	------------------------	-----------------------------	---

RNAV (GPS) RWY 9

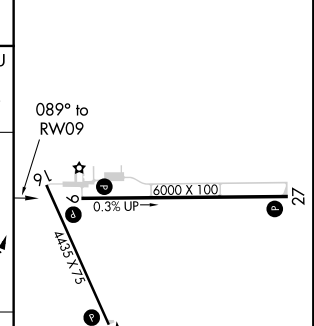
TAYLOR COUNTY (MDZ)

RNP APCH.	MISSED APPROACH: Climb to 3500 direct JAQKU and hold.
-----------	---

AWOS-3 119.025	MINNEAPOLIS CENTER 124.4 317.7	UNICOM 122.8 (CTAF) 0
--------------------------	--	---------------------------------



ELEV 1478	TDZE 1469
-----------	-----------



CATEGORY	A	B	C	D
LP MDA	1800-1	331 (400-1)		
LNAV MDA	1800-1	331 (400-1)		
CIRCLING	1900-1 422 (500-1)	2040-1 562 (600-1)	2040-1½ 562 (600-1½)	2180-2¼ 702 (800-2¼)

REIL Rwy 9, 27 and 34 0
MIRL Rwy 9-27 and 16-34 0

EC-3, 07 OCT 2021 to 04 NOV 2021

EC-3, 07 OCT 2021 to 04 NOV 2021